

I/A Series[®] Hardware Auto/Manual Station



The Auto/Manual Station allows an operator to select the auto or manual mode of operation. The Auto/Manual Station provides a dedicated operator interface to the Single 0 to 20 mA I/O, Auto/Manual Interface Module (FBM22), PSS 21H-2E1 B4.

In the auto mode of operation, the I/A Series system is in control of the 0 to 20 mA output of the associated Single 0 to 20 mA I/O, Auto/Manual Interface Module.

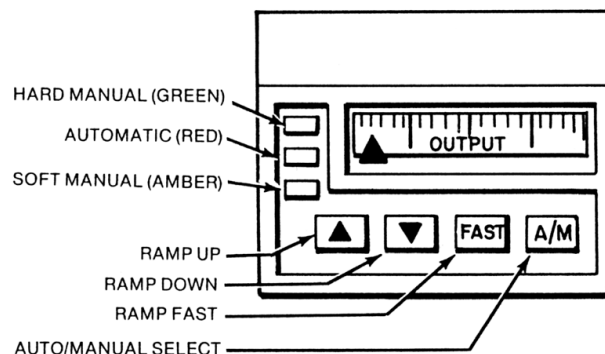
In the manual mode of operation, the operator assumes hard manual control of the 0 to 20 mA output of the associated Single 0 to 20 mA I/O, Auto/Manual Interface Module. The operator views the current flowing through the loop, via a moving coil meter, and through the use of ramping keys may increase or decrease, at a fast or standard rate, the 0 to 20 mA output of the Single 0 to 20 mA I/O, Auto/Manual Interface Module.

The Auto/Manual Station contains a moving coil meter to indicate the current flow in a loop, switches for ramp control, and LED indicators to show the operating mode of the I/A Series system in regard to a particular loop. All of the electrical control circuitry for the Auto/Manual Station is contained in the Single 0 to 20 mA I/O, Auto/Manual Interface Module.

The Auto/Manual Station may be disconnected without interrupting the current to the controlled loop.

The Auto/Manual Station may be mounted in a DIN panel cutout (see Dimensions - Nominal) with or without an associated Panel Display Station (see PSS 21H-1C1 B4).

The Auto/Manual Station connects through the Auto/Manual Interface Module (FBM22) to the Control Software in the Panel Display Processor 10. Operation of the Auto/Manual Station requires configuration of Integrated Control Software. For System Integration, refer to PSS 21H-1D1 B3, Panel Display Processor 10.



FUNCTIONAL SPECIFICATIONS

Operating Controls

UP KEY (↑)

Ramps the output of the Single 0 to 20 mA I/O, Auto/Manual Interface Module from 0 mA to 20 mA

Standard Rate

0 to 20 seconds for full scale

Fast Rate

0 to 5 seconds for full scale

Resolution

0.5%

DOWN KEY (↓)

Ramps the output of the Single 0 to 20 mA I/O, Auto/Manual Interface Module from 20 mA to 0 mA

Standard Rate

0 to 20 seconds for full scale

Fast Rate

0 to 5 seconds for full scale

Resolution

0.5%

FAST KEY (FAST)

Selects fast rate of up or down key

AUTO/MANUAL KEY (A/M)

Selects Auto/Manual mode of operation

Operating Indicators

MOVING COIL METER

Indicates amount of current flow through the loop

Current

0 to 20 mA (0 to 100%)

Accuracy

2.5%

Impedance

12.5Ω

GREEN INDICATOR

Indicates that the output of the Single 0 to 20 mA I/O, Auto/Manual Interface Module is under hard manual control via the Auto/Manual Station.

AMBER INDICATOR

Indicates that the output of the Single 0 to 20 mA I/O, Auto/Manual Interface Module is under soft manual control via an I/A Series Workstation.

RED INDICATOR

Indicates that the output of the Single 0 to 20 mA I/O, Auto/Manual Interface Module is under control of the I/A Series Control Processor.

ENVIRONMENTAL SPECIFICATIONS

Operating

TEMPERATURE

0 to 60°C (32 to 140°F)

RELATIVE HUMIDITY

5 to 95% (Noncondensing)

ALTITUDE

-300 to +3,000 m (-1,000 to +10,000 ft)

Storage

TEMPERATURE

-40 to +85°C (-40 to +185°F)

RELATIVE HUMIDITY

5 to 95% (Noncondensing)

ALTITUDE

-300 to +12,000 m (-1,000 to +40,000 ft)

Contamination

Class G1 (mild) as defined in ISA Standard, S71.04

PHYSICAL SPECIFICATIONS

Mounting

DIN panel cutout (see Dimensions--Nominal)

Mass

1.4 kg (3.08 lb)

Signal Connectors

AUTO/MANUAL STATION

15-way Min-D socket

SINGLE 0 TO 20 mA I/O, AUTO/MANUAL

INTERFACE MODULE

Discrete Wire Block

16 screw-clamp terminals

Plug Connector Block

34-pin connector (mates with the Burndy MSD 34

PM 118 or equivalent).

Distance Auto/Manual Station to FBM22

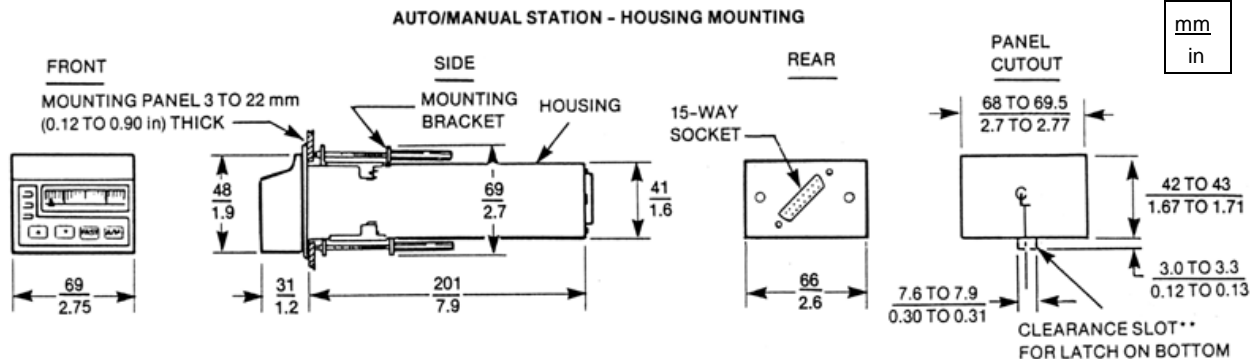
Single 0 to 20 mA I/O, Auto/Manual Interface Module

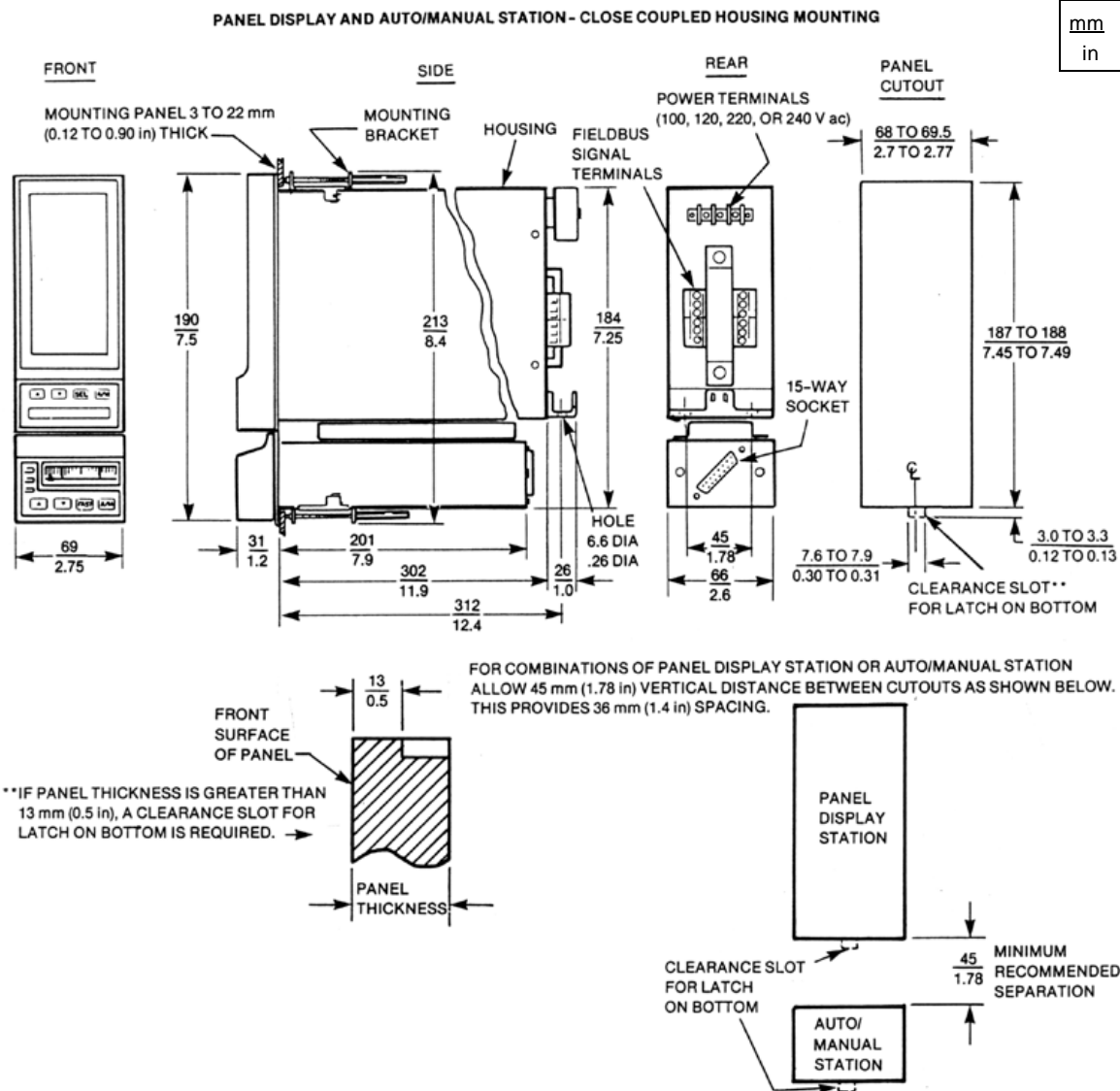
304.8 m (1000 ft) maximum.

Cables available in various lengths.

Electrical Classification

Ordinary Locations.



**The Foxboro Company**

33 Commercial Street
Foxboro, Massachusetts 02035-2099

United States of America

<http://www.foxboro.com>

Inside U.S.: 1-508-543-8750 or 1-888-FOXBORO (1-888-369-2676)

Outside U.S.: Contact your local Foxboro Representative.

Foxboro and I/A Series are registered trademarks of The Foxboro Company.

Copyright 1989 by The Foxboro Company

All rights reserved