

G22 System and Termination Enclosure



The I/A Series® G22 System and Termination Enclosure provides environmental protection and housing, with termination and marshalling options for I/A Series DIN rail mounted subsystem modules.

FEATURES

The I/A Series G22 system and termination enclosure offers the following features:

- ▶ Accommodates one 2-position Modular Baseplate to support Field Control Processors (FCP270s)/Fieldbus Communications Modules or one 4-position Expansion Baseplate to support a pair of Field Control Processors (FCP270s) and Fieldbus Expansion Modules (FEM100s)
- ▶ (Enclosure front) Vented and sealed 800w x 600d x 2000mm high enclosures accommodate up to 32 Fieldbus Modules (FBMs) in up to four Modular Baseplates
- ▶ (Enclosure rear) Up to two 1800 mm vertical DIN rails for mounting of termination assemblies and terminal blocks for marshalling, to provide a total of 3.6 m of linear rail space
- ▶ Vented and sealed enclosure selection for use in ordinary (IP 43/55) or harsh (IP 55/66) rated environments
- ▶ Compact design to minimize use of floor space with both front and rear access that allow maximum density of enclosures in a control environment

- ▶ Available PVC or non-PVC wireways for field I/O cabling
- ▶ Generous 76 mm x 102 mm (3 in x 4 in) wireways with adequate capacity for most wire management
- ▶ Option for single or redundant main power supplies and main/backup field I/O power supplies
- ▶ Bottom or top cable entry for field wiring, but can be customer configured for simultaneous top and bottom cable entry
- ▶ Conveniently placed eyebolts for transporting and lifting the enclosures
- ▶ A 100 mm (4 in) plinth - total enclosure height of 2160 mm (85.0 in)
- ▶ Comfort door handles with push-button/keylocks
- ▶ Standard protective earth (ground) studs or optional isolated instrument earth (ground) rail.
- ▶ One 2-position Modular Baseplate to support Field Control Processors (FCP270s)/ Fieldbus Communications Modules (FCMs) -or- one 4-position FEM100 Expansion Baseplate to support a pair of FCP270s and Fieldbus Expansion Modules (FEMs)
- ▶ Up to two FPS400-24 power supplies (redundant power) to support the Modular Baseplates.

The G22 vented enclosure is a free-standing, floor mounted unit with an IP 43/55 rating for location in mild (ordinary) environmental areas.

The G22 sealed enclosure is a free-standing, floor mounted unit, with options for either an IP 55 or IP 66 rating for location in harsh environments. Sealed enclosures with an IP 66 rating provide a higher level of protection from airborne contamination.

Multiple G-series enclosures can be installed connected to one another to maximize the use of floor space and ease of cabling. The enclosures can be bayed together using Invensys or third-party kits as discussed in the *Enclosures and Mounting Structures Site Planning and Installation User's Guide* (B0700AS).

The rear of the G22 enclosure can be set up in one of two basic configurations:

- ▶ Termination only - DIN rails are allocated for the mounting of termination assemblies only, where the customer terminates field signals directly to the termination assemblies.
- ▶ Marshalling - DIN rails are set up in pairs of termination assemblies and terminal blocks to provide additional functionality (such as fusing, disconnects, and lock-out validation) or where customers wish to terminate field cable bundles to dedicated terminal blocks and marshall signals to the appropriate termination assemblies.

INTRODUCTION

The G22 enclosure is specifically designed for housing DIN rail mounted subsystem modules and their associated termination assemblies and customer-supplied terminal blocks for marshalling. The G22 enclosure is available as a vented enclosure or sealed enclosure.

The G22 vented and sealed enclosure can be configured with:

- ▶ Up to four 8-position vertically mounted Modular Baseplates, for mounting up to 32 Fieldbus Modules (FBMs)
- ▶ Up to two vertical DIN rails for mounting of termination assemblies (TAs) and terminal blocks for marshalling

This enclosure and its configurations have been tested and qualified by Invensys for use with specified DIN rail mounted subsystem modules.

INGRESS PROTECTION

The metal enclosures provide the outer layer of protection for the control electronics. Other layers are provided by the module covers and built into the modules. This approach to protection means that a minimum of contaminants in the plant environment reaches the control components, thus greatly extending the life of the equipment.

For sealed IP 55/66 certified enclosures, heat is transferred from the interior surfaces of the enclosure and then dissipated by the enclosure's exterior surfaces into the plant environment. Air is not exchanged between the enclosure's interior and the outside environment; therefore, contaminants are minimized inside the enclosure. Sealed IP 55/66 versions can be used outdoors in sheltered locations.

The enclosures support convenient top or bottom cable entry for termination assembly cabling and power wiring. Vented enclosures with roof-mounted fans are not recommended with top cable entry.

THERMAL PROTECTION

Ventilation fans along with vented doors increase circulation for heat removal and can be used:

- ▶ At installations with only moderate levels of airborne contaminants, enclosure interiors can be exposed to allow plant air to circulate and remove the heat generated within the modules
- ▶ In areas where there are no requirements to filter the air to which the modules in the enclosure are exposed (such as office areas).

Vented enclosures contain a dual fan assembly located at the top of the enclosure or single fan assemblies located on the enclosure front and rear door. Enclosures with vented doors can be located in main equipment areas or in an environment with office air quality.

DUAL THERMOSTAT

An optional dual (high/low) thermostat is available to monitor enclosure temperature extremes, with the exception of Zone 2/Class I, Division 2 applications.

MODULAR BASEPLATE MOUNTING

The enclosure can contain various types of vertically mounted Modular Baseplates, which accommodate different quantities and types of modules (FCPs/FBMs/FCMs) and optionally, one FEM100 Expansion Baseplate which accommodates a pair of FCP270s and FEM100s.

For the enclosure to accommodate a higher density of modules and maximize accessibility and space for termination assembly cables, the baseplates are mounted in a vertical position. Vertical cable runs minimize the need to dress and route cables at ninety-degree angles while providing a direct path for cable access to the bottom or top of the enclosure. While improving layout, vertical orientation also reduces any horizontal obstructions, thus increasing airflow and improving overall thermal performance.

For more information on the various types of Modular Baseplates in an I/A Series system, refer to *DIN Rail Mounted Modular Baseplates* (PSS 21H-2W6 B4).

For more information on the various types of termination assemblies in an I/A Series system, refer to the Fieldbus Module Product Specification Sheets (PSSes) listed in *DIN Rail Mounted FBM Subsystem Overview* (PSS 21H-2W1 B3).

VENTED ENCLOSURE DESIGN OPTIONS

The G22 vented enclosure is available with either roof-mounted or door-mounted fans.

Roof-mounted fans provide the best performance for cooling, and provide a lower noise-level than the door-mounted fans, at the cost of restricting top-entry cable access to the enclosure and reducing the overall ingress protection rating. For customers who plan to modify the swing direction of their enclosure doors, fans mounted on the roof allow the process to proceed more smoothly.

Door-mounted fans are desirable for top entry cable access configurations, and provide the highest level of ingress protection for vented enclosures.

FIELDBUS I/O GROUPS

The vented and sealed G22 system and termination enclosures have two vertical DIN rails accessed from the front of the enclosure for mounting vertically mounted Modular Baseplates and their power supplies, and up to two vertical DIN rails accessed from the rear of the enclosures for termination assemblies and customer-supplied terminal blocks for marshalling. One front-accessed DIN rail can mount up to four 8-position FBM Modular Baseplates, and the Baseplates on this rail are called a Fieldbus Input/Output (I/O) Group. This Fieldbus I/O Group has an optionally redundant FPS400 power supply associated with the group and either an optional 2-position vertically mounted Modular Baseplate for FCMs/FCPs or optional FEM100 Expansion Baseplate for FCP270s and FEM100s associated with the group. These power supplies and FCMs/FCP Baseplates are mounted on the second front-accessed DIN rail (see Figure 1 and Figure 2).

TERMINATION ASSEMBLY MOUNTING

The G22 enclosure has up to two vertical DIN rails in the rear of the enclosure for mounting termination assemblies and customer-supplied terminal blocks for marshalling. These DIN rails are mounted in the center of the enclosure.

An optionally redundant 100-250 V ac/125 V ac, 50-60 Hz field power supply is available for field power, and is mounted on side rails of the enclosure (see Figure 1). Both vented and sealed enclosures have a limited thermal load (see “Operating Temperatures” on page 11).

Optional bus bars for field wiring shields and DIN rail isolation are available. Isolation allows rails to be isolated from the enclosure earth and are used when customer field shields are terminated on dedicated terminal blocks that ground to the DIN rail.

TERMINATION ASSEMBLY/INPUT POWER CABLING AND WIREWAYS

The enclosures can be ordered for bottom cable entry or top cable entry or modified by the customer for simultaneous top and bottom cable entry.

For the top cable entry version, the termination assembly cables and/or customer power feeds enter through customer-configured cable glands. Any customizations made must follow the enclosure manufacturer's guidelines to preserve the enclosure's ingress protection rating. Vented enclosures with roof-mounted fans are not recommended for top cable entry.

For the vented bottom entry version, the termination assembly cables and power cable enter through removable gland plates, located at the bottom (inside) of the enclosure, which can be removed, drilled, or punched for cable routing.

For the sealed bottom entry version, the termination assembly cables and power cables enter through a solid bottom panel located at the bottom (inside) of the enclosure, which can be drilled, or punched for cable routing. Users must provide their own cable glands (for top or bottom cable entry), in keeping with maintenance of the enclosure's ingress protection.

Cable straps are provided in the enclosure to dress and support the termination assembly cables. Field I/O signals must be connected to the termination assembly mounted in the same enclosure or an adjoining I/A Series termination enclosure.

An optional signal segregation barrier plate provides isolation between the two interior adjacent wireways.

Wiring is restricted to preconfigured wireways, available in PVC or non-PVC versions.

POWER AND EARTHING (GROUNDING)

The G22 enclosure supports an optional redundant power system, in which dual power distribution (two power supplies fed by independent entry sources) provides redundancy protection against power failures.

Power wiring to the enclosure is routed through the bottom or top of the enclosure. Optional dual power input feeds terminate at dedicated primary and secondary power distribution terminal blocks.

All enclosure structural elements are integrally earthed by the enclosure design to meet the appropriate industry regulations and standards.

The G22 enclosure uses a DIN rail mounted power supply that provides 24 V dc to DIN rail mounted baseplates. The power supply is agency certified for use in Zone 2/Class I, Division 2 applications. For more information, refer to *DIN Rail Mounted Power Supply* (PSS 21H-2W3 B4).

Earthing (Grounding)

Two M8 studs (one for each enclosure side) provide a central earth (ground) point and dedicated earthing points when baying enclosures together.

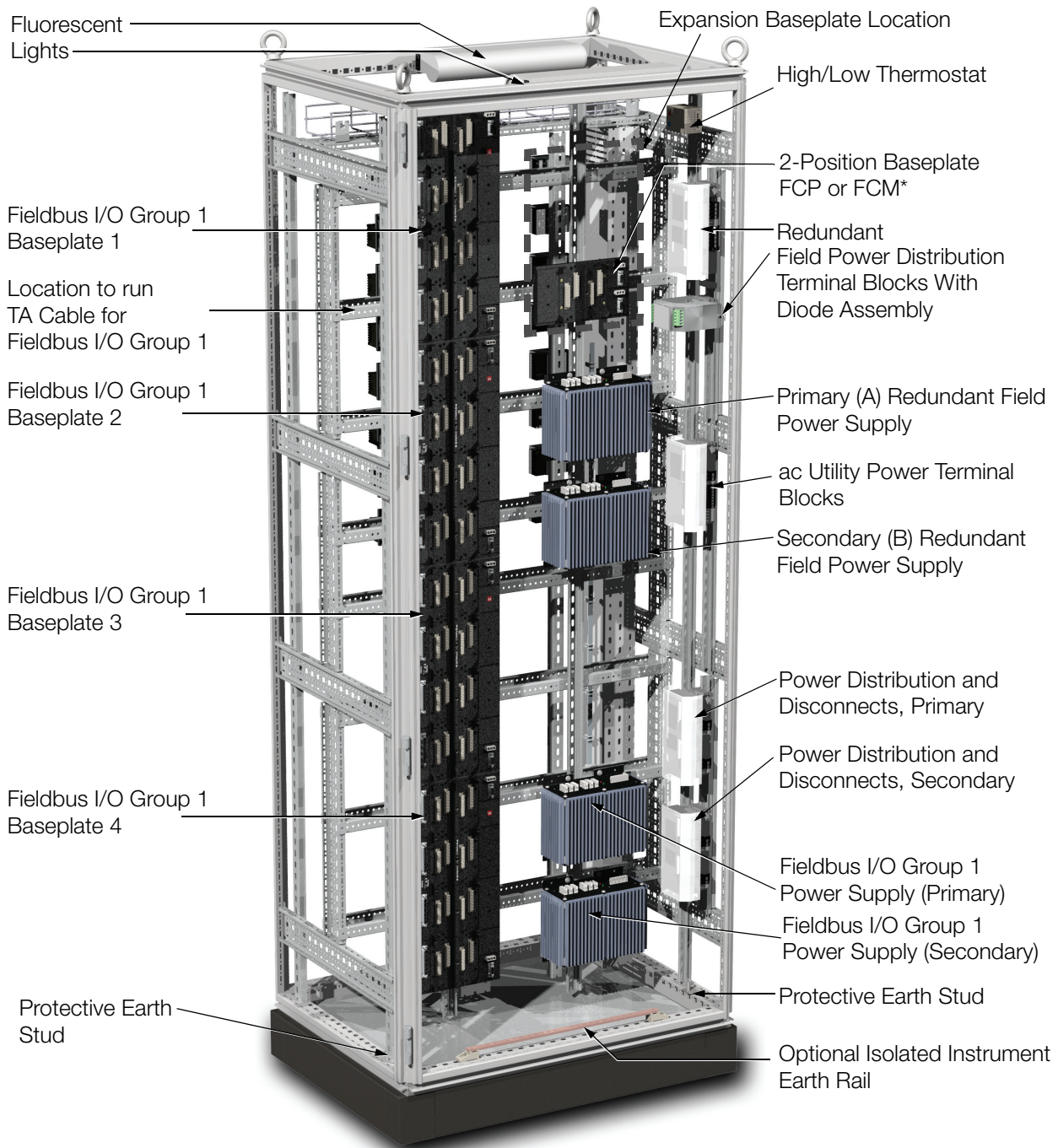
An optional isolated bus bar is available for additional earth (ground) points.

Power Distribution

Each power distribution terminal block assembly (primary, secondary or utility for powering fans and lights, see Figure 1) has dedicated ring lug assembly terminal blocks for customer main power. Each also has fused, knife disconnect terminal blocks for interrupting the main power, as well as independent knife disconnect terminal blocks for each device, for ease of service.

Additional blocks are provided for the customer to install utility outlets.

The enclosure is available without these power distribution terminal blocks when the customer has requirements for power distribution specific to regional electrical codes.



* With Expansion Baseplate option, the 2-Position Baseplate (for FCP/FCMs) is replaced with one 4-Position FEM100 Expansion Baseplate to support two FCP270s and two FEM100s.

Figure 1. G22 System and Termination Enclosure, Front View

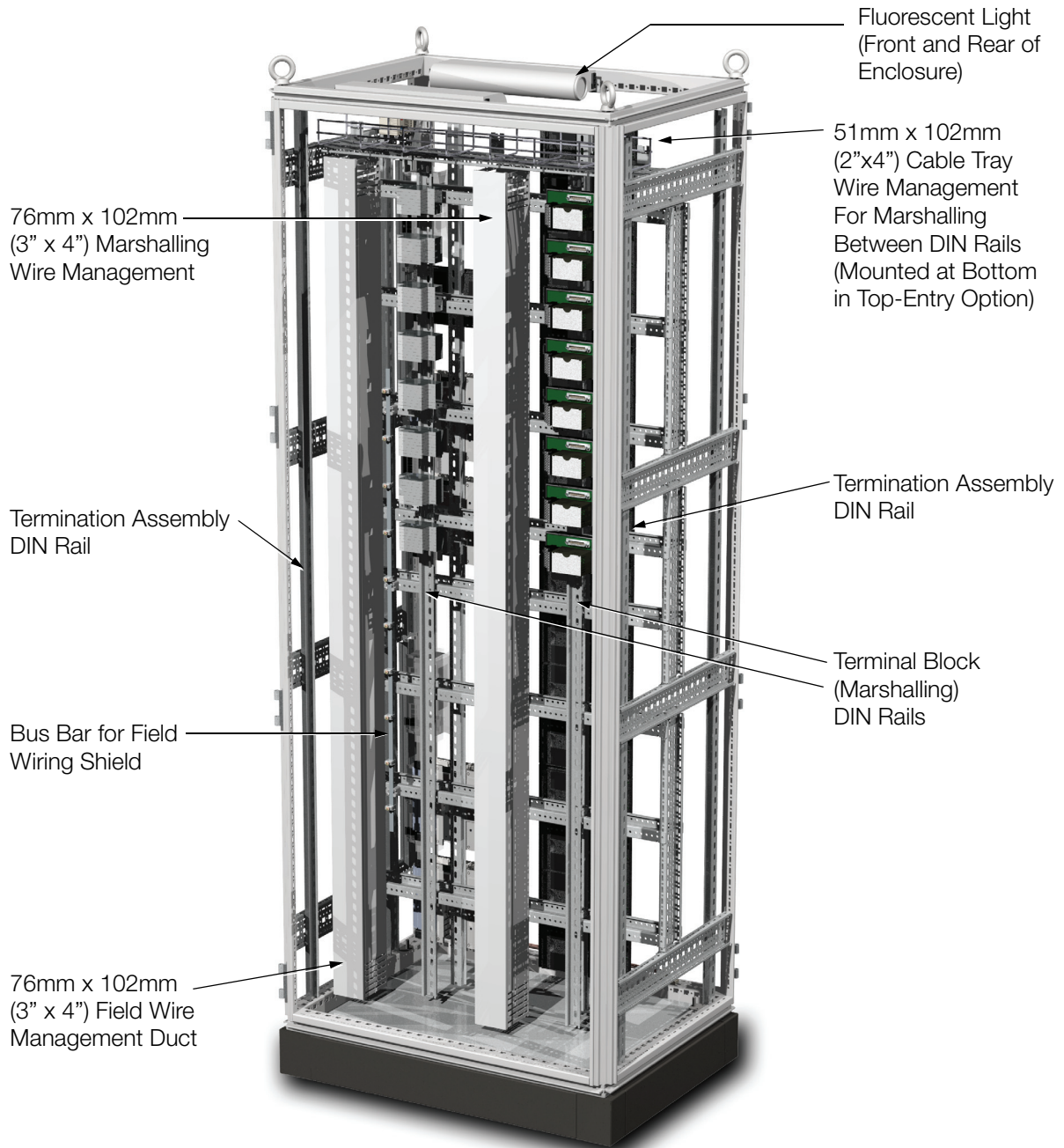
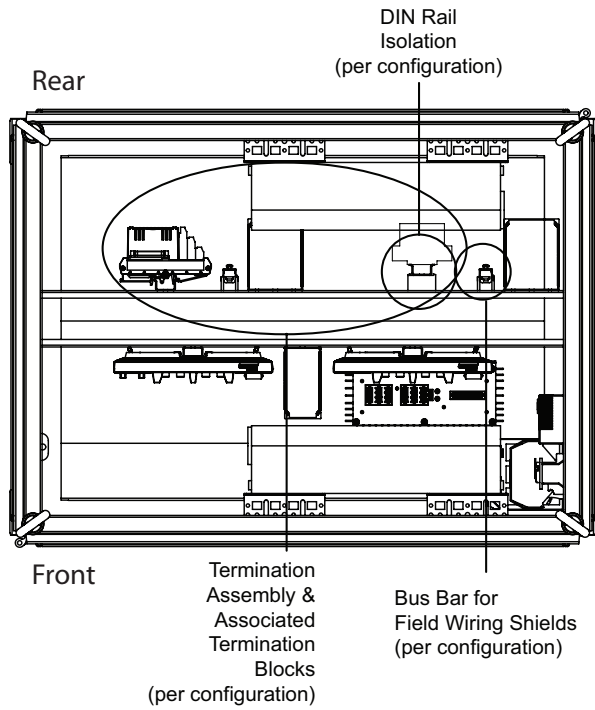
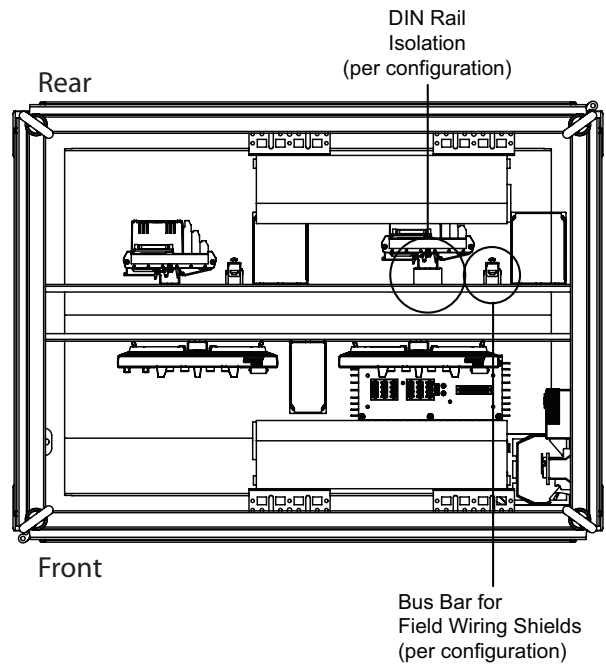


Figure 2. G22 System and Termination Enclosure, Rear View

G22 Marshalling Layout



G22 Termination Layout



Note: For both setups, the front right and front right side DIN rails are reserved for terminal blocks and power supplies associated with single or redundant 24 V dc field power per configuration.

Figure 3. G22 Enclosure Termination and Marshalling Layouts and DIN Rail Identification

ENCLOSURE FEATURES AND OPTIONS

The G22 enclosure is provided with the following features, some of which are optional.

Table 1. G22 Enclosure Features and Options

Feature	Availability
Base Enclosure	Vented IP 43/55 rated enclosure with single front and rear door-mounted fans (120 V ac or 240 V ac) or roof -mounted fans (120 V ac or 240 V ac - dual fans), or Sealed IP 55 rated enclosure, or Sealed IP 66 rated enclosure.
Enclosure Access	Front and rear access
Front Door	Solid front door with inlet vents
Cable Entry	Bottom cable entry or top cable entry (top entry not recommended for roof-mounted fans)
Sidewalls	Options configurable based on baying requirements
Door Handle	Comfort handle with push-button/keylock
Door Mounting	Universal mounting for left and right-hand door swing (left-hand is default)
Equipment Supported	Up to four 8-position Modular Baseplates for housing up to 32 FBMs One 2-position Modular Baseplate for FCMs/FCPs, or one FEM100 Expansion Baseplate for a pair of FCP270s and FEM100s Single or redundant FPS400-24 power supplies per Fieldbus I/O Group to support the Modular Baseplates Up to two DIN rails per enclosure available for mounting termination assemblies and customer-supplied terminal blocks for marshalling.
Field Wiring	PVC or non-PVC wireways for field I/O signal cabling Optional bus bars for field wiring shields and/or DIN rail isolation.
Enclosure Lighting ^(a)	Universal single and/or dual enclosure lights with motion activation
Thermostat ^(a)	Dual temperature thermostat
Fans ^(a)	Door-mounted or roof-mounted fans
Earthing (Grounding) ^(a)	Two protective earth (ground) studs Optional isolated instrument rail for additional connectors

Table 1. G22 Enclosure Features and Options (Continued)

Feature	Availability
Main Power ^(a)	100-250 V ac, 50-60Hz, 125 V dc input primary only or primary and secondary power, or 100-250 V ac, 50-60Hz, 125 V dc input primary and 24 V dc secondary power, or 24 V dc input primary only or primary and secondary power, or Additionally, customer configured field power entry is supported (no terminal blocks supplied).
Field Power	Single or redundant field power supply, 100-250 V ac, 50-60Hz, 125 V dc input, or Single or redundant power distribution terminal block assemblies for customer configured power entry No option is available for 24 V dc field power - however, it can be directly sources by the customer following local electrical guidelines Additionally, customer-configured field power entry is supported (no terminal blocks supplied).
Utility Power	120 V ac or 240 V ac utility power terminal block

(a) If you are installing a G-series enclosure as part of a Zone 2 (IEC) / Class I, Division 2 application, refer to PSS 21H-2W2 B3, *Agency Certifications*, to determine I/A Series DIN Rail Mounted Equipment hazardous location suitability. Also, be aware that optional enclosure electrical accessories such as fluorescent lights, roof or door-mounted fans and thermostats may not be used in hazardous (Zone 2 (IEC) / Class I, Division 2) environments.

FUNCTIONAL SPECIFICATIONS

Enclosure

The enclosures are free-standing, floor mounted, steel industrial enclosures containing:

- ▶ Vertically mounted 8-position Modular Baseplates for mounting Fieldbus Modules (FBMs)
- ▶ Vertically mounted 2-position Modular Baseplates for FCP270s/FCMs or one 4-position Expansion Baseplate for FCP270s/FEMs
- ▶ Vertically mounted DIN rail mounted termination assemblies and customer-supplied terminal blocks for marshalling
- ▶ FPS400-24 power supplies (single or redundant power).

Input Power (Optionally Redundant)

Refer to PSS 21H-2W3 B4

ENVIRONMENTAL SPECIFICATIONS

Ingress Protection Ratings

VENTED

Door-Mounted Fans

IP 55 to EN 60 529 / NEMA 12

Roof-Mounted Fans

IP 43 to EN 60 529/10.9191 / NEMA 12

SEALED

IP 55 to EN 60 529 / NEMA 12

IP 66 to EN 60 529 / NEMA 4

Operating Temperatures

VENTED (THERMAL LOADING)

-20 to +60°C (-4 to +140°F)

Up to 750 Watts (Average)

-20 to +55°C (-4 to +131°F)

750 to 1000 Watts (Maximum)

SEALED (THERMAL LOADING)

-20 to +50°C (-4 to +122°F)

Up to 400 Watts (Average)

-20 to +45°C (-4 to +113°F)

400 to 500 Watts (Maximum)

Storage Temperature

-40 to 70°C (40 to 158°F)

Relative Humidity

5 to 95% (noncondensing)

Acoustic Noise Level⁽¹⁾

ROOF-MOUNTED FANS

61 dB (A) at 1 m / 58 dB (A) at 3 m

DOOR-MOUNTED FANS

64 dB (A) at 1 m / 62 dB (A) at 3 m

SEALED ENCLOSURE (NO FANS)

Ambient / Ambient

Dual Thermostat

HIGH ALARM SETTING

NC contact, Range - 0 to 60°C (32 to 140°F)

LOW ALARM SETTING

NO contact, Range - 0 to 60°C (32 to 140°F)

Agency Certification

Empty enclosure is UL and UL-C approved.

Enclosure meets all applicable European Union directives and is CE compliant. Final installed enclosures populated with your equipment should be inspected by your local UL/CSA committee, or other local safety governing organization if required. A complete listing of certifications is available from enclosure vendor. For installed I/A Series equipment, refer to PSS 21H-2W2 B3.

Area Designation

Per customer order, vented and sealed are available for general purpose area; hazardous area (Zone 2 (IEC)/ Class I, Division 2, (North America)) must use sealed enclosure only.

(1) Under normal operating conditions, with both fans running, at enclosure's mid-height at 46 dB (A) ambient noise level.

PHYSICAL SPECIFICATIONS

Mass

The mass of the enclosure is dependent upon the particular configuration. Consult with an Invensys representative if precise mass figures are required.

VENTED ENCLOSURE (MAX. CONFIGURATION)

800 mm wide x 600 mm deep - 234 kg (516 lb)

SIDE PANEL

2000 mm high x 600 mm deep - 6 kg (14 lb)

Mounting

Floor

CAUTION

To prevent injury, this enclosure must be bolted down. Refer to the installation guide.

Construction

Sheet steel with textured, powder-coated finish

Color

SIDE PANELS, ROOF, AND DOORS

RAL 7035 - light gray - textured

PLINTH

RAL 7022 - umbra gray smooth

Panel Thickness

DOORS

2 mm (14 ga)

SIDE PANELS, ROOF

1.5 mm (16 ga)

Construction

MATERIAL

Doors

Sheet steel, 2.0 mm (14 ga)

Frame, Roof, Side Panels, Gland Plates

Sheet steel, 1.5 mm (16 ga)

Base/Plinth

Sheet steel and plastic

FINISH

Frame

Dipcoat-primed, RAL 7044 smooth

Doors, Roof, Side Panels

Dipcoat-primed, powder-coated, RAL 7035 (light gray) textured

FINISH (CONT.)

Base/Plinth

Dipcoat-primed, RAL 7022 (umbra gray) smooth, plastic cover caps RAL 9005 (jet black)

Gland Plates and Internal Hardware

Zinc-plated, passivated

Cable Entry

VENTED ENCLOSURE

Bottom through gland plate(s)

Top through customer cutouts in enclosure top (For enclosure with roof-mounted fans, suggested entry is bottom)

SEALED ENCLOSURE

Bottom through steel panel and customer cutouts in panel

Top through customer cutouts in enclosure top

Earthing (Grounding)

ROOF, SIDEWALLS, GLAND PLATES

Automatic potential equalization built in

DOORS

Dedicated 4 mm² (11 ga) ground strap to enclosure frame

ENCLOSURE

Two M8 studs (one for each enclosure side)

An optional isolated bus bar for additional earth (ground) points.

Power Input Terminals

TYPE

Ring Lug

WIRE SIZE

Up to 6 mm² (10 AWG)

RING LUG SIZE

M4 Maximum (DIN 46 234/46 237), 9.6 mm maximum O.D.

Termination Assembly Cabling

Universal mounting straps are supplied for securing, routing and strain relieving of termination assembly cables. Each strap supports up to a 75 mm (3 in) diameter cable bundle.

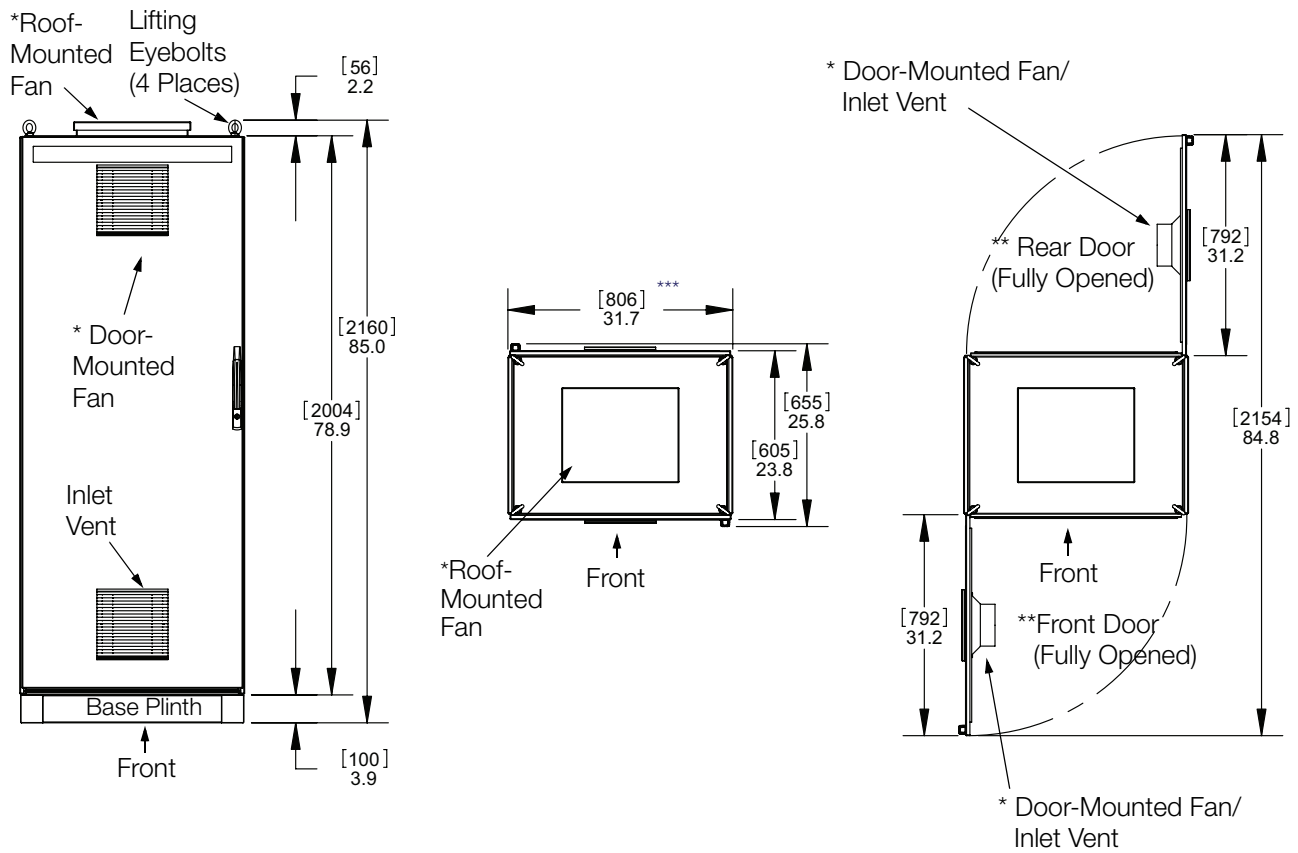
FOR MORE INFORMATION

For additional information describing I/A Series enclosures for DIN rail mounted modules, refer to the following documentation.

Document Number	Description
PSS 21H-2W1 B3	DIN Rail Mounted FBM Subsystem Overview
PSS 21H-2W2 B3	DIN Rail Mounted FBM Equipment, Agency Certifications
PSS 21H-2W3 B4	DIN Rail Mounted Power Supply
PSS 21H-2W6 B4	DIN Rail Mounted Modular Baseplates
PSS 21H-2X8 B3	G-Series Enclosures Overview
PSS 21H-2Y14 B4	FEM100 Fieldbus Expansion Module
ISA-S71.04-1985 (not Invensys-supplied)	Environmental Conditions for Process Measurement and Control Systems: Airborne Contaminants

DIMENSIONS - NOMINAL

G22 System and Termination Enclosure



* VENTED ENCLOSURES ONLY - EITHER ROOF- OR DOOR-MOUNTED CONFIGURATIONS CAN BE ORDERED.
 ** DOORS ARE FACTORY-CONFIGURED FOR LEFT-HAND SWING, BUT CAN BE RECONFIGURED AT SITE FOR RIGHT-HAND SWING.
 *** WITH SIDE PANELS, WITHOUT SIDE PANELS 800/31.5

Invensys Operations Management
5601 Granite Parkway Suite 1000
Plano, TX 75024
United States of America
<http://iom.invensys.com>

Global Customer Support
Inside U.S.: 1-866-746-6477
Outside U.S.: 1-508-549-2424 or contact
your local Invensys representative.
Email: support@invensys.com
Website: <http://support.ips.invensys.com>

Invensys, Foxboro, I/A Series, and the Invensys logo are trademarks of Invensys plc, its subsidiaries, and affiliates. All other brands and product names may be the trademarks of their respective owners.

Copyright 2007-2010 Invensys Systems, Inc. All rights reserved. Unauthorized duplication or distribution is strictly prohibited.