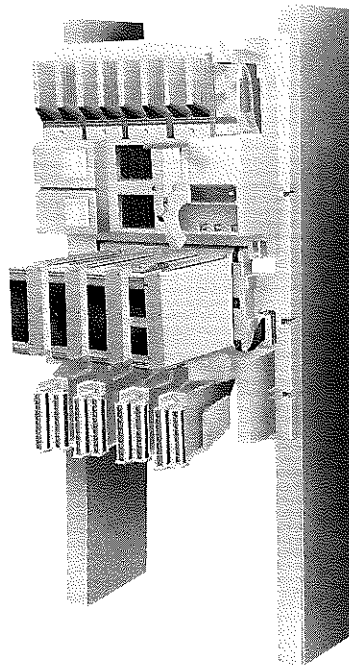
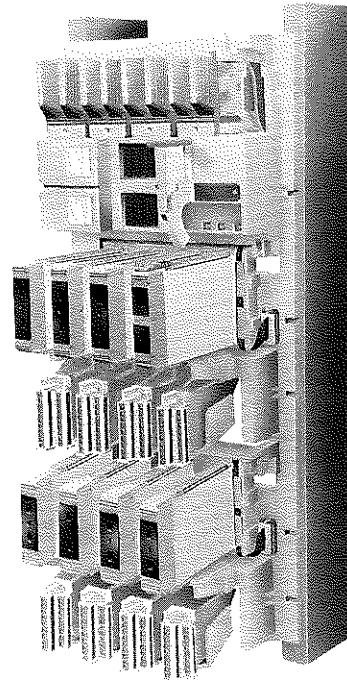


## Intelligent Automation Series Local Enclosures



LOCAL ENCLOSURE 4



LOCAL ENCLOSURE 8

*The Intelligent Automation Series Systems have two types of Local Enclosures, the Local Enclosure 4 and the Local Enclosure 8. The Local Enclosure 8 is an I/O capacity expansion of the Local Enclosure 4 contained within the same embodiment. Both enclosures are specifically designed to house multiple Fieldbus modules for use within a controlled or process environment.*

### **Local Enclosure 4**

The Local Enclosure 4 accepts from one to four Fieldbus modules, or three Fieldbus modules and a pair of Fieldbus Isolators. This type enclosure contains up to four power modules, all receiving power via wiring through channels along either of the enclosure sides. Field I/O wires enter the enclosure in a similar manner and terminate at assemblies residing immediately below the Fieldbus modules.

### **Local Enclosure 8**

The Local Enclosure 8 accepts from one to eight Fieldbus modules, or seven Fieldbus modules and a pair of Fieldbus Isolators. This enclosure contains up to four power modules, and receives power and I/O signals via wiring through channels along either of the enclosure sides.

## FUNCTIONAL SPECIFICATIONS

### Environmental

**Operating Temperature** The environmental specifications for the Local Enclosures are fully dependent upon those limits and constraints of the input/output modules residing within.

**Storage Temperature** -40 to +70°C (-40 to +158°F)

**Contamination Class** The Contamination Class is solely dependent on the limits of the modules contained in the structure

**Relative Humidity and Altitude** Relative humidity and altitude specifications are solely dependent on the limits of the modules contained in the structure

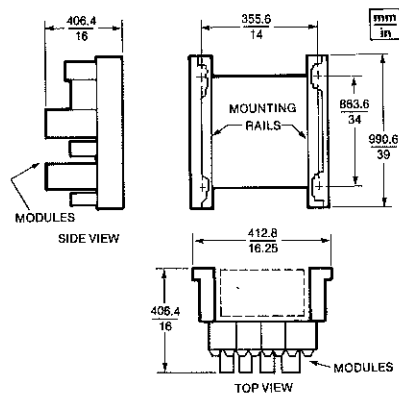
## PHYSICAL SPECIFICATIONS

**Mass (Fully loaded)**  
 4 INPUT/OUTPUT MODULES 32 kg (70 lb)  
 8 INPUT/OUTPUT MODULES 37 kg (83 lb)

**Mounting**  
 WALL (with mounting rails) All Sizes

**Construction (Case)** Molded structural foam, (heat deflection temperature, 96°C (205°F) at 66 psi; 82°C (180°F) at 264 psi)

**Field-Wire Termination** Cable/high-density termination.



Dimensions—Nominal

I/A Series is a trademark of  
 The Foxboro Company

Copyright © 1989  
 The Foxboro Company

Printed in U.S.A.