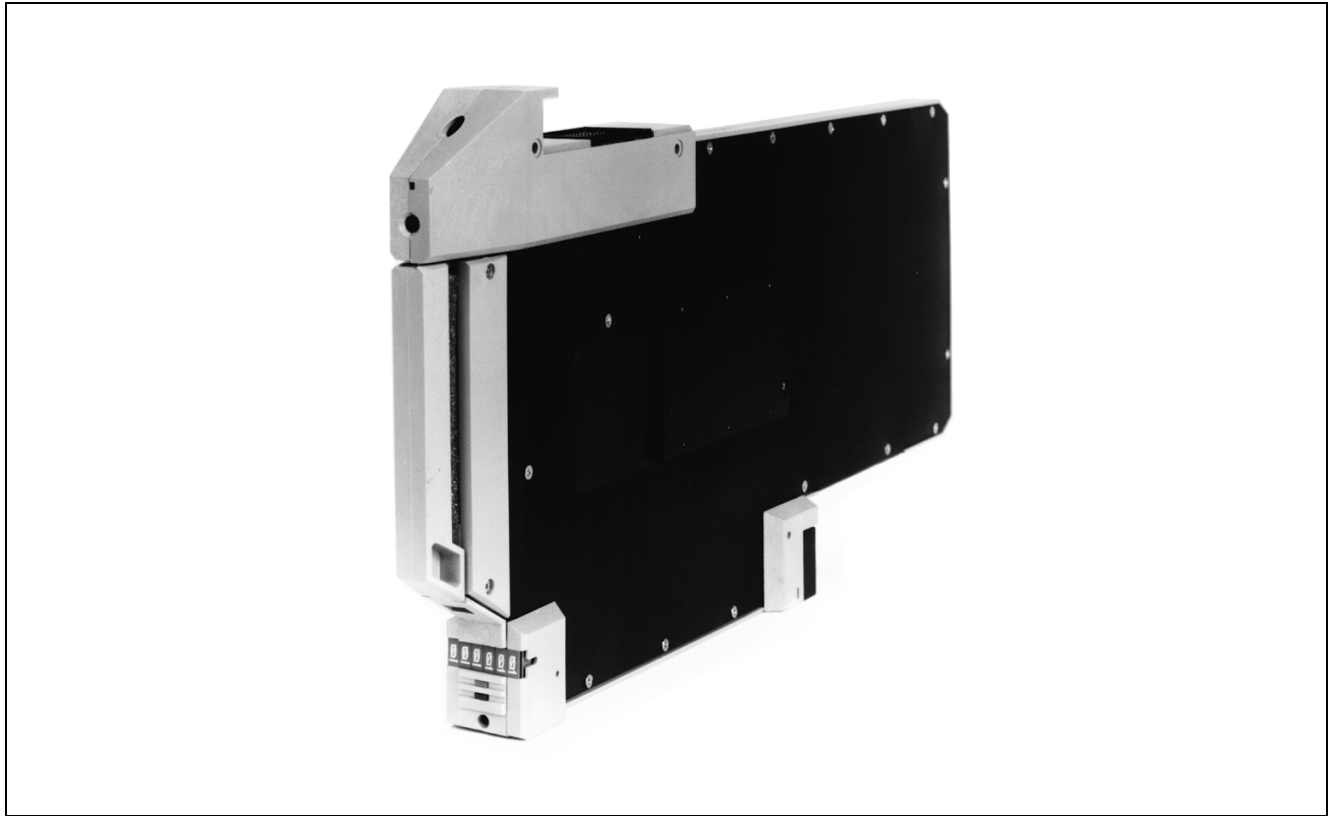


## I/A Series® Hardware Integrator 30



The Integrator 30 comprises the foundation for various intelligent device interfaces, and for computer and information network connections. It is packaged as a non-expandable single width Z-Module that connects to the Mounting Structure Bus and accesses the nodebus. Peripheral connections are made via cable connectors secured to the top or bottom of the mounting structure that houses the Integrator 30. The integrator hardware architecture consists of the following:

- 80386SX/80186EC Processors
- Dynamic RAM Memory
- Nodebus Interface
- Two RS-423 Interface I/O Ports
- 80387SX Numeric Coprocessor

As this unit is the base hardware for multiple products, the number of supported ports is determined by the product on which it is used.

## FUNCTIONAL SPECIFICATIONS

### Processor Type

80386SX/80186EC Microprocessors with 80387SX numeric coprocessor

### Memory

64 Kb EEPROM; 4 Mb parity DRAM for 80386SX; 512 Kb parity dual-ported DRAM for 80386SX and 80186EC

### Protocol Capability

Synchronous/asynchronous 5 to 8 bit characters; odd, even or no parity; 1 or 2 stop bits

### Port

Two RS-423 (synchronous/asynchronous)

### Channel Performance

Synchronous/asynchronous I/O port at 100K bits/second maximum

### Intra-System Communication

Redundant Nodebus

### Power Requirements

INPUT VOLTAGE (REDUNDANT)

24 V dc (nominal)

CONSUMPTION

15 W (maximum)

### Isolation

The RS-423 channel is isolated from the system power source. All signals for the RS-423 are isolated for 500 V.

### Internal Diagnostics

Self-checking performed at power-up. Runtime checks and watchdog timer function performed during operation.

## ENVIRONMENTAL SPECIFICATIONS (a)

### Operating Temperature

0 to 60°C (32 to 140°F)

### Storage Temperature

-40 to +85°C (-40 to +185°F)

### Humidity

5 to 95% (Noncondensing)

### Altitude

-300 to +12,000 m (-1,000 to +40,000 ft)

### Contamination

Class G3 (Harsh) as defined in ISA Standard S71.04

(a) The environmental limits of this module may be enhanced by the type of enclosure containing the module. {Refer to the applicable Product Specification Sheet (PSS) which describes the specific type of enclosure that is to be used.}

## PHYSICAL SPECIFICATIONS

### Mass (Maximum)

2.2 kg (4.9 lbs)

### Mounting

May be placed in most system mounting structures.

### Indicators

Red and green light-emitting diodes (LEDs) indicate diagnostic status.

### The Foxboro Company

33 Commercial Street

Foxboro, Massachusetts 02035-2099

United States of America

<http://www.foxboro.com>

Inside U.S.: 1-508-543-8750 or 1-888-FOXBORO (1-888-369-2676)

Outside U.S.: Contact your local Foxboro Representative.

Foxboro and I/A Series are registered trademarks of The Foxboro Company.

Copyright 1993 by The Foxboro Company

All rights reserved