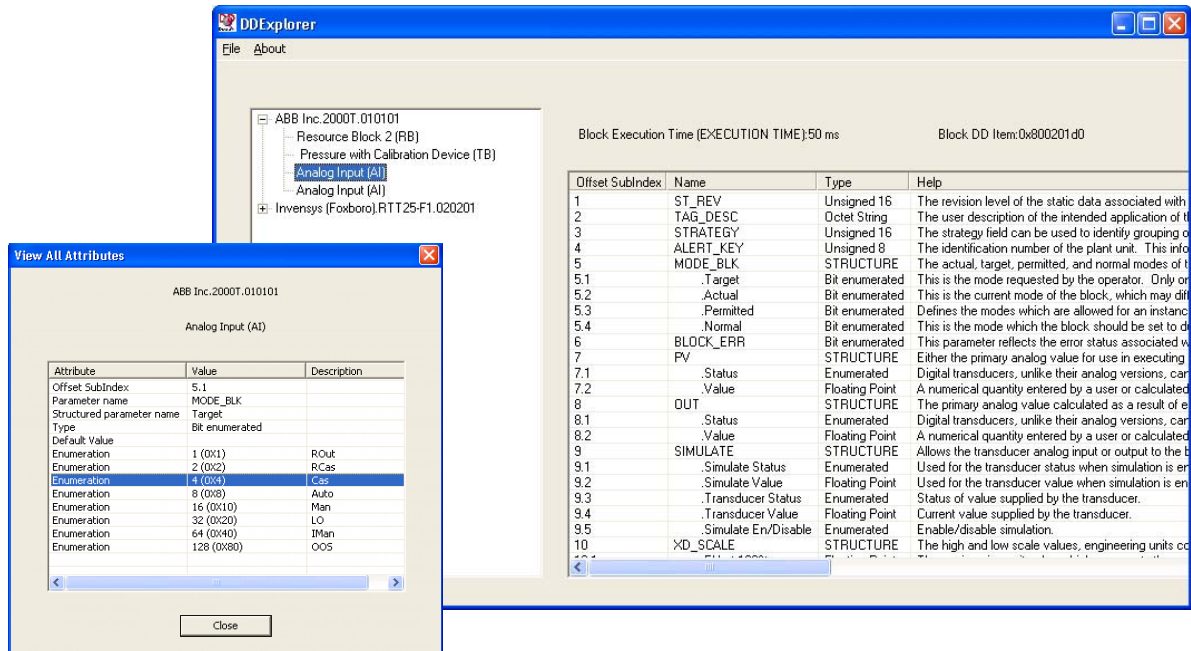


I/A Series® Software

PSS 21S-1C3 B3

FOUNDATION™ fieldbus Device Descriptor Explorer Software (DD Explorer)



The DD Explorer window (above) displays device block parameters in a convenient tabular format, while the View All Attributes dialog box (left) provides details on a selected parameter.

The I/A Series® DD Explorer software is a FOUNDATION™ fieldbus device description browser that facilitates configuration of I/A Series control systems and connected FOUNDATION™ fieldbus H1 devices.

DD Explorer loads device description (DD) files and common file format (CFF) files supplied by device vendors or downloaded from the Fieldbus Foundation web site, www.fieldbus.org.

The utility has three basic uses:

- Provides device information to I/A Series Configuration Component software (IACC) for configuration of control blocks and device function blocks.

- Serves as a browser providing detailed information on device parameters
- Generates H1 device templates for import to FoxCAE™ Computer Aided Engineering software (FoxCAE) for creation of a device database

Included with DD Explorer is the Live List Tool which allows attached devices to be viewed.

AUTOMATING BLOCK CONFIGURATION

By linking to information in the device descriptions (including the DD revision and device revision), DD Explorer enables IACC to create equipment control block (ECB) templates, each representing H1 device types used in the plant. Instances of the device type are added by selecting the template from a list and entering the PD_Tag of the specific instance.

DD Explorer also ensures that IACC properly enumerates and displays parameter pull-down choices when configuring function blocks. (Figure 1).

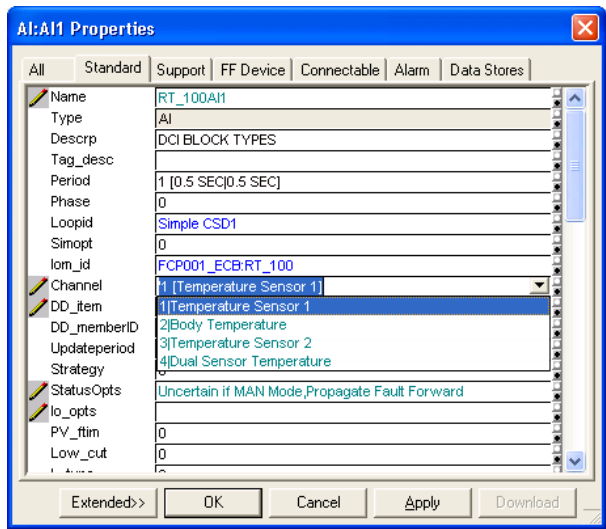


Figure 1. Parameter Choices in an IACC Function Block Properties Sheet Derived from DD Explorer

CONVENIENT DEVICE DESCRIPTION BROWSER

The DD Explorer window consists of a data tree including types of devices and their resource, transducer, and function blocks; and a table displaying for each parameter in a selected block, the offset subindex, name, data type, and a help string.

A pop-up menu below the table accesses the View All Attributes dialog box, which provides details on the selected parameter.

DEVICE TEMPLATES FOR ONLINE CONFIGURATION

FoxCAE is the recommended tool for configuring H1 device-level resource and transducer blocks. DD Explorer supports the device configuration in FoxCAE by creating H1 device templates (Figure 2), which can be imported into FoxCAE in place of uploading a configuration database from the H1 devices. The completed configuration can then be downloaded to the H1 devices via the I/A Series system.

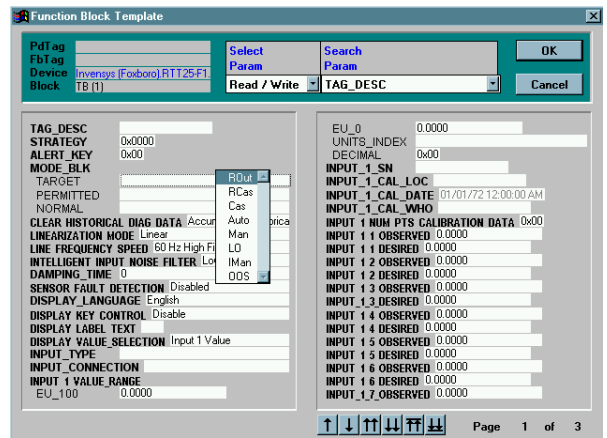


Figure 2. FoxCAE Device Template generated by DD Explorer enables Online Device Configuration

LIVE LIST TOOL

The Live List Tool (LLT) allows devices on a connected segment to be viewed and also allows the PD_Tag and Address assignments to be changed (Figure 3).

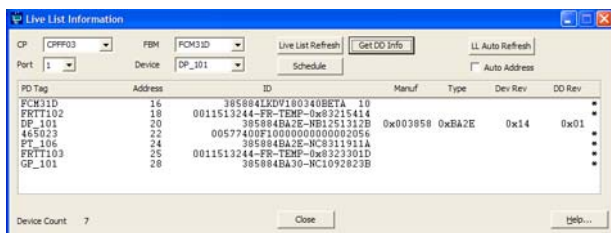


Figure 3. Live List Information

The following information can be displayed:

- ▶ PD_Tag
- ▶ Address
- ▶ Device ID
- ▶ Manufacturer
- ▶ Device Type
- ▶ Device Revision
- ▶ DD Revision
- ▶ All Blocks in a Device (Figure 4)
- ▶ Graphic View of the Macrocycle (Figure 5)

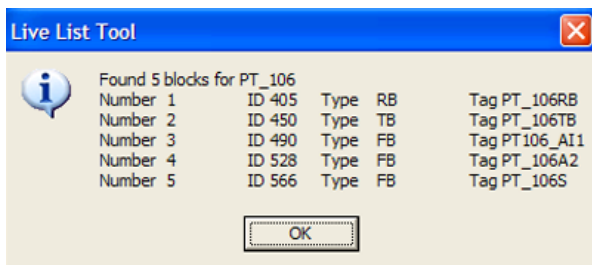


Figure 4. Blocks in Device

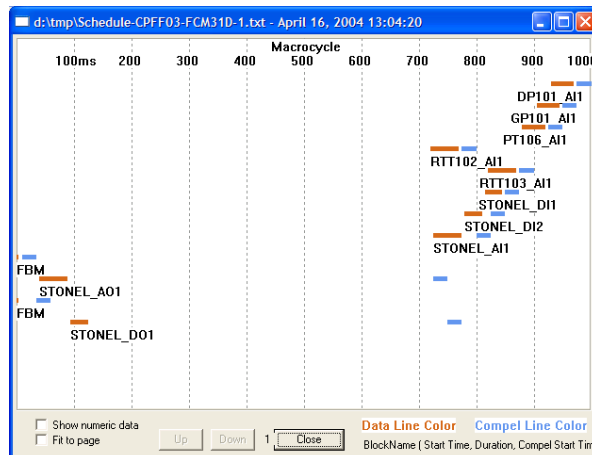


Figure 5. View of Macrocycle

INSTALLATION

The DD Explorer utility is installed on a Windows XP® workstation running IACC Version 2.0 or greater. The IACC instance can be either the IACC server or a client-only installation.

DD Explorer is installed from a single CD-ROM that includes an InstallShield® Wizard for DD Explorer, the run-time software with required dynamic link libraries (DLLs), and other support files. The CD automatically launches the wizard when loaded.

HARDWARE AND SOFTWARE REQUIREMENTS

Microsoft® Windows XP based workstation with:

- ▶ IACC Version 2.0 software (either a server or client-only instance).
- ▶ Device Description Files from vendors or FOUNDATION™ fieldbus
- ▶ FoxCAE Version 5.0 or later.



33 Commercial Street
Foxboro, MA 02035-2099
United States of America
www.foxboro.com
Inside U.S.: 1-866-746-6477
Outside U.S.: 1-508-549-2424
or contact your local Foxboro
representative.
Facsimile: 1-508-549-4999

Invensys, Foxboro, and I/A Series are trademarks of Invensys plc, its subsidiaries, and affiliates.
All other brand names may be trademarks of their respective owners.

Copyright 2004 Invensys Systems, Inc.
All rights reserved

MB 21A

Printed in U.S.A.

1004