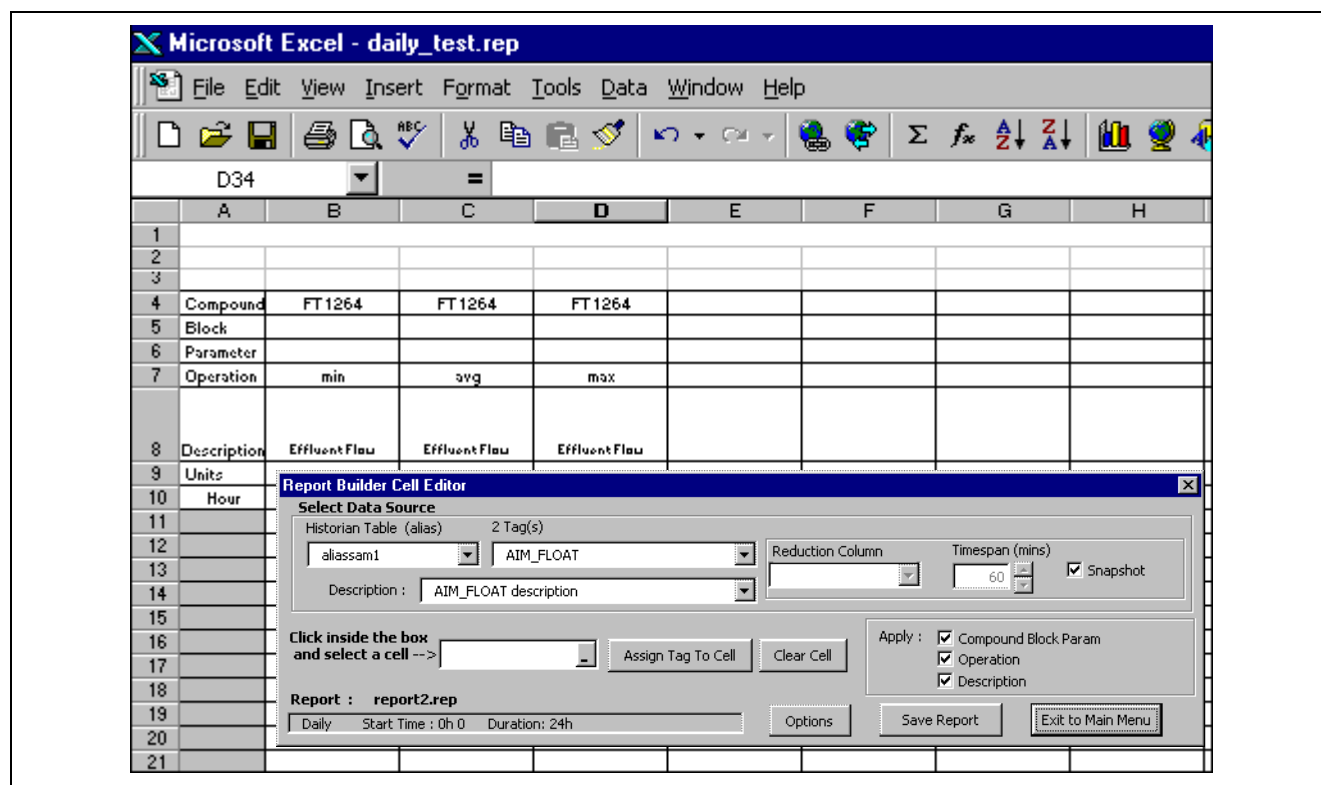


# I/A Series® Information Suite Report Package



The I/A Series Report Package is a graphical report builder that connects points configured in I/A Series Historian and AIM\*Historian™ databases to a Microsoft® Excel worksheet. The software includes a report engine, scheduler, and preformatted report templates.

## INTRODUCTION

The I/A Series Report Package is an easy-to-use, interactive tool for generating and scheduling production reports based on historian data - either from the I/A Series Historian or AIM\*Historian instances.

The I/A Series Report Package utilizes Microsoft Excel 97 or Excel 2000, supporting standard Excel file formats and taking advantage of familiar computational and presentation tools.

The package includes a scheduler that allows you to set up reports to run automatically at the end of each shift, day, week, or month. In addition, any report can be run on demand to satisfy immediate information needs.

Reports can be automatically distributed by e-mail to key individuals, as well as given wider distribution as a web page on the plant intranet.

## I/A Series REPORTS FEATURES

The I/A Series Report Package software integrates a Windows® based report builder and scheduler with Microsoft Excel to provide a comprehensive report capability. Features of the software include:

- Interactive and easy-to-use graphical interface provides a drag-and-drop report builder.
- No programming is required.
- Graphical scheduler automates reports by shift, day, week, or month.
- Standard Excel environment offers familiar formatting and presentation tools.
- On-demand option provides immediate execution of any scheduled or unscheduled report.
- Automatic e-mail of reports to pre-defined address lists using Microsoft Exchange.
- Automatic generation of HTML versions of reports, allows them to be accessed from the plant intranet with standard browsers such as Microsoft Internet Explorer and Netscape Navigator®.
- Standard open database connectivity (ODBC) interface allows for integration with other ODBC-aware applications.
- File maintenance options schedule storage of reports for specified periods, after which they are automatically purged.

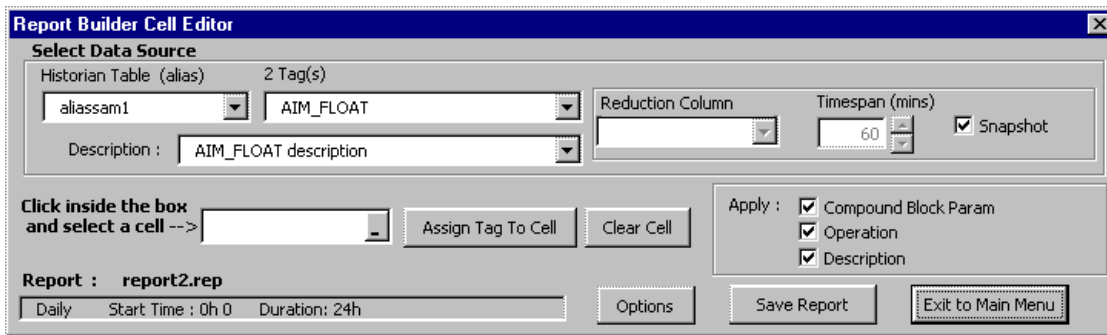


Figure 1. Report Builder Cell Editor

## I/A Series REPORT PACKAGE FEATURES

### Creating a Report

The I/A Series Report Package accesses I/A Series Historian and AIM\*Historian instances using an ODBC interface. An individual report can access sample files for raw real-time points, or reduction groups for averages, sums, and other computed values.

The reports are created in an Excel worksheet with a series of point-and-click tools such as the Cell Editor dialog box, which allows you to simply insert tags that are configured in the connected historian (Figure 1).

### Scheduling Reports

With the scheduler, you set reports to run automatically at specified times, such as at the end of each shift or after a specific shift. Other standard report intervals include daily, weekly and monthly options. You can also easily configure custom intervals. Figure 2 shows definition of an event so that a report can be run at the end of the first shift.

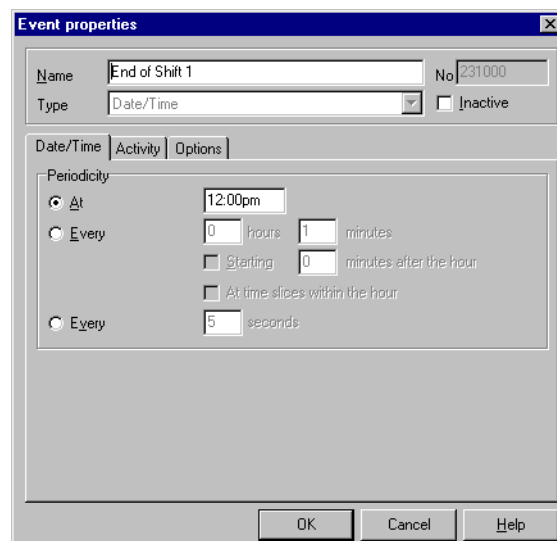


Figure 2. Scheduling Events

To meet one-time information needs, you can run any scheduled report on demand. You can specify that the report be run for the current time, or for an earlier date and time. You can also specify a progress report if the report period is not yet completed (Figure 3).

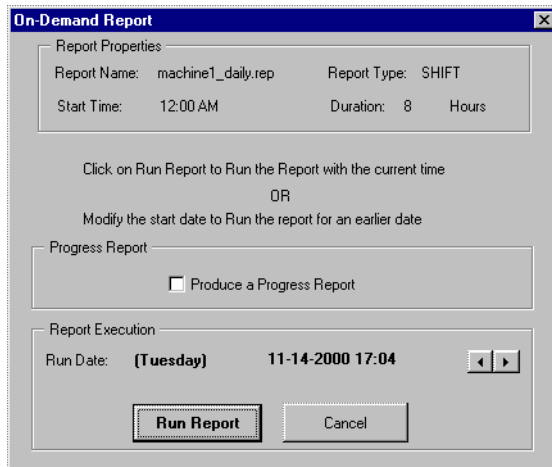


Figure 3. Dialog Box for On-Demand Reports

### Report Distribution and Management

The Report Builder provides a number of distribution and file management options so that you can realize maximum utility while conserving system resources.

For example, you can make the report available as an HTML page on the plant intranet and/or automatically e-mail the report to a defined list.

You also specify how long reports are to be available, where they are to be saved and who has access to the reports. For example, you can specify that some daily reports overwrite the version from the previous day, while other daily reports are saved for one week. For the reports that are stored for a week, the package appends the report date and time to the title of each new report, and purges the report from a week ago.

### SYSTEM REQUIREMENTS

- Pentium™ based PC with 64 MB RAM (128 MB RAM is required if the host is an Application Workstation 70 [AW70]).
- Windows NT 4.0 with Service Pack 5 or later.
- Microsoft Excel 97 (SR-2) or Excel 2000.
- AIM\*AT™ ODBC Driver.
- I/A Series system software. Release 4.0 or later on the AW51 (Solaris®), or Release 6.0 or later on an AW70 (Windows NT).
- The accessed I/A Series station may require a second Ethernet card.

**The Foxboro Company**

33 Commercial Street  
Foxboro, Massachusetts 02035-2099  
United States of America  
<http://www.foxboro.com>

Inside U.S.: 1-508-543-8750 or 1-888-FOXBORO (1-888-369-2676)

Outside U.S.: Contact your local Foxboro representative.

AIM\*AT, AIM\*Historian, Foxboro, and I/A Series are trademarks of The Foxboro Company.

Microsoft, Windows and Windows NT are trademarks of Microsoft Corporation.

Pentium is a trademark of Intel Corporation.

Netscape Navigator is a trademark of Netscape Communications Corporation.

Solaris is a trademark of Sun Microsystems Incorporated.

Copyright 2001 by The Foxboro Company

All rights reserved