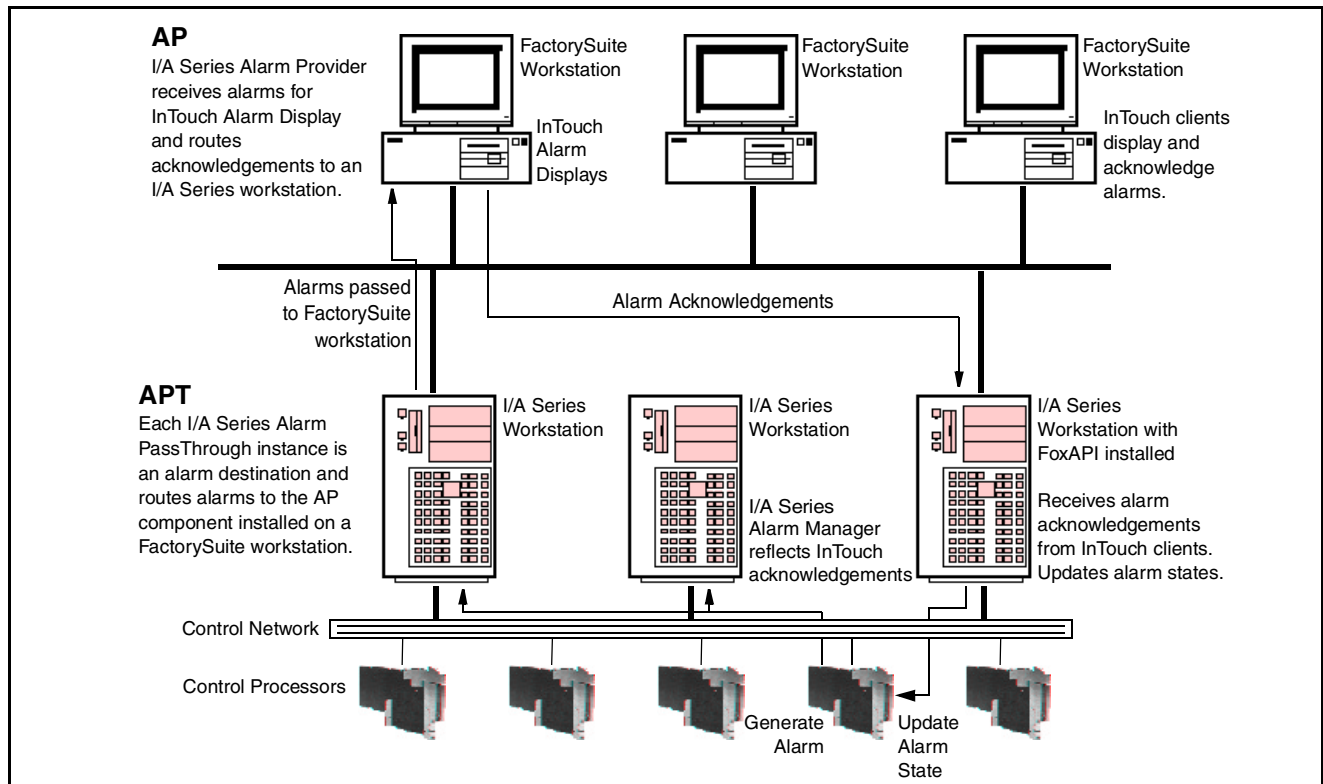


I/A Series A²™ Software

I/A Series A² Alarm Integration to FactorySuite A²™ Software



I/A Series A²™ Alarm Integration to FactorySuite A²™ software (Alarm Integration) directs I/A Series® process alarms to InTouch® Alarm Displays (and thus to any FactorySuite® workstation) and routes alarm acknowledgments from the InTouch clients to the I/A Series system.

Alarm Integration consists of two components:

- Alarm PassThrough operating on I/A Series workstations
- I/A Series Alarm Provider operating on a FactorySuite workstation.

Both components run in the background and require no user interaction.

ALARM PASSTHROUGH (APT)

The APT component is installed on one or more workstations running I/A Series software (Version 6.4 or greater). Each APT instance has a logical name, which can be configured in various compounds to receive process alarm messages from CPs on the control network.

APT then forwards the alarm messages to the FactorySuite workstation over an Ethernet network.

I/A SERIES ALARM PROVIDER (AP)

The AP component is installed on a FactorySuite workstation running InTouch software. FactorySuite workstation users can display and acknowledge alarms with the same InTouch Alarm Display application they use to view alarms from other control systems.

Alarm acknowledgements from InTouch clients are sent to a FoxAPI™ or AIM*API™ server on an I/A Series workstation. The acknowledgements update the alarm status of affected blocks. The APT component then routes alarm state updates to AP so that the InTouch Alarm Displays reflect the current status.

ALARM DISPLAYS ON INTOUCH CLIENTS

The AP component enables access to I/A Series alarms from InTouch clients, collection of alarm data with Alarm Logger, and inquiries from Information Suite clients using InSQL and SuiteVoyager® software. I/A Series alarm message displays are created with InTouch WindowMaker and are accessed with WindowViewer (Figure 1).

FEATURES

The Alarm Integration software expands your options for managing process alarms, enabling display and acknowledgement of alarms from InTouch clients while maintaining existing I/A Series alarm management functions. The Alarm Integration software also makes alarm data available to the wide array of FactorySuite information management applications.

Specific Alarm Integration features:

- I/A Series alarm types are automatically mapped to the appropriate InTouch alarm class and type.
- APT is fully compatible with the I/A Series Alarm Manager application. APT can operate on the same workstation with Alarm Manager or on a separate I/A Series workstation.
- An APT instance is configured as an alarm destination by adding its device name to one or more compounds or station blocks, the same method used for directing alarms to the I/A Series Alarm Manager.
- APT can be installed on multiple I/A Series workstations to balance processing load, while a single AP application is capable of handling alarms from multiple APT instances.
- Alarm Integration enables management of alarms from the I/A Series system and other control systems in a single familiar interface.
- I/A Series alarms can be accumulated in Alarm Logger and other FactorySuite applications for diagnostics, analysis, and compliance reporting.

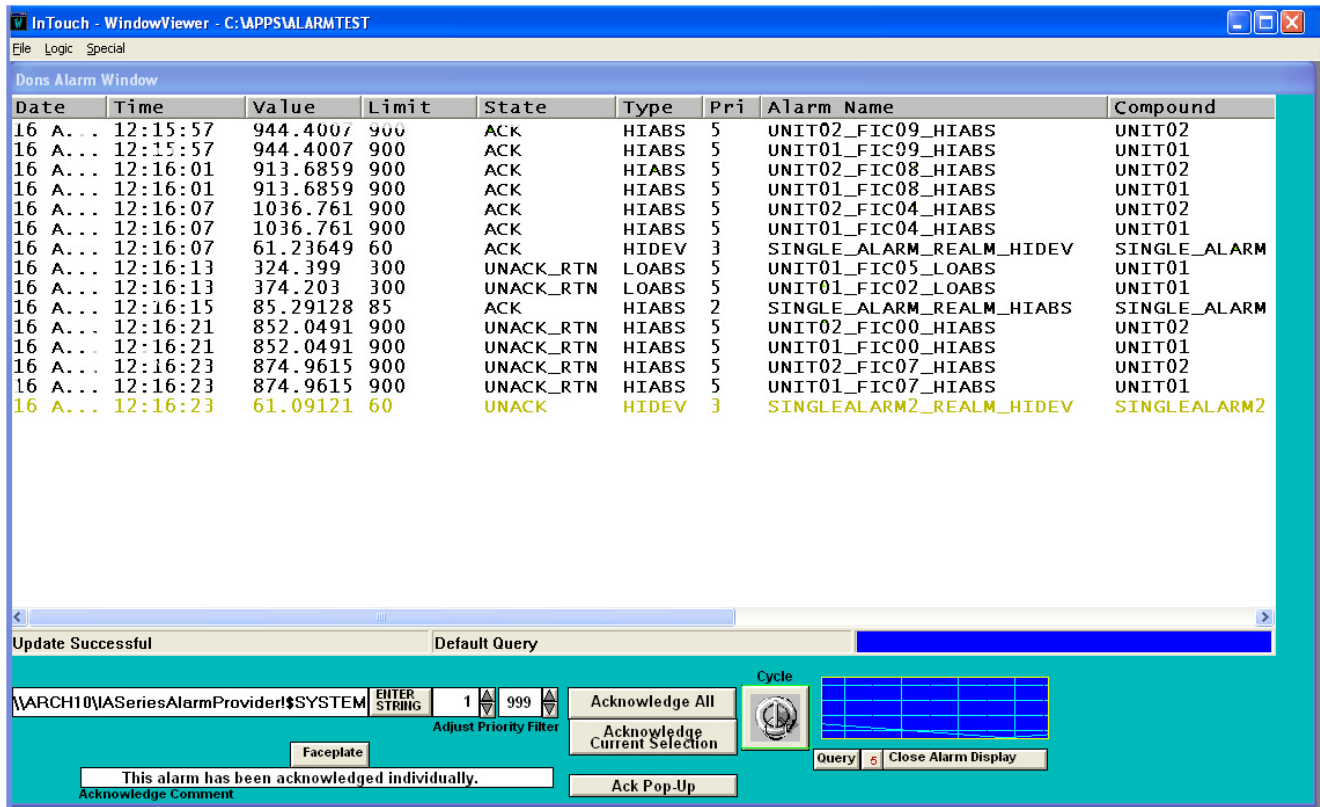


Figure 1. I/A Series Alarms Messages Displayed in an InTouch Alarm Display

- Information users can query for I/A Series alarm data using InSQL and SuiteVoyager software.
- Alarm acknowledgments from InTouch clients are automatically propagated to the corresponding I/A Series blocks, and updates to the alarm states are routed back to InTouch clients, as well as to Alarm Manager.
- InTouch displays always reflect the user-actions from I/A Series Alarm Manager and vice-versa.
- When the aging option is used, the AP component clears alarms from InTouch displays after a user-specified period. Clearing alarms from InTouch displays with the aging option has no effect on alarm management on I/A Series workstations.

INSTALLATION

The Alarm Integration software is installed from a single CD, which includes setup programs, a configuration utility for the AP component, the runtime software, and a user guide.

OPERATION

The APT component starts automatically when the host I/A Series workstation is booted, and runs in the background as a service. Likewise, the AP component runs as a service that starts automatically when the host FactorySuite workstation is booted. No user intervention is required for operation or maintenance of either component.

SYSTEMS REQUIREMENTS

Alarm Passthrough (APT) Component

Platform

The Alarm Passthrough component (APT) is installed on one or more workstations running I/A Series software (Version 6.4 or greater). The I/A Series platforms run one of the following operating systems:

- Solaris 2.5.1
- Solaris 8.0
- Windows NT 4.0
- Windows XP

Communications

APT instances are connected to the FactorySuite workstation over an Ethernet network.

Application Performance

The Alarm Integration application can support up to 200 alarms per second steady state.

I/A Series Alarm Provider (AP) Component

Platform

FactorySuite workstation running InTouch software version 8.0.

The AP component cannot be installed on a workstation that is running I/A Series software.

Communications

For alarm acknowledgment from FactorySuite clients, the AP communicates over an Ethernet network with an AIM*API or FoxAPI server running on an I/A Series workstation. The server does not need to be on the same workstation as one of the APT instances.

Additional Software

The AP component requires installation of two software packages on the FactorySuite workstation:

- Microsoft® .NET Framework, 1.0 or greater
- Microsoft Data Access Component (MDAC), 2.71 or greater

The AP setup program checks for required software and loads the appropriate versions if they are not already installed.

33 Commercial Street
Foxboro, Massachusetts 02035-2099
United States of America
www.foxboro.com
Inside U.S.: 1-866-746-6477
Outside U.S.: 1-508-549-2424 or contact your local Foxboro representative.
Facsimile: 1-508-549-4999

Invensys, AIM*API, ArchestrA, FactorySuite, FactorySuite A², Foxboro, I/A Series, I/A Series A² and InTouch are trademarks of Invensys plc, its subsidiaries, and affiliates.
All other brand names may be trademarks of their respective owners.

Copyright 2003 Invensys Systems, Inc.
All rights reserved