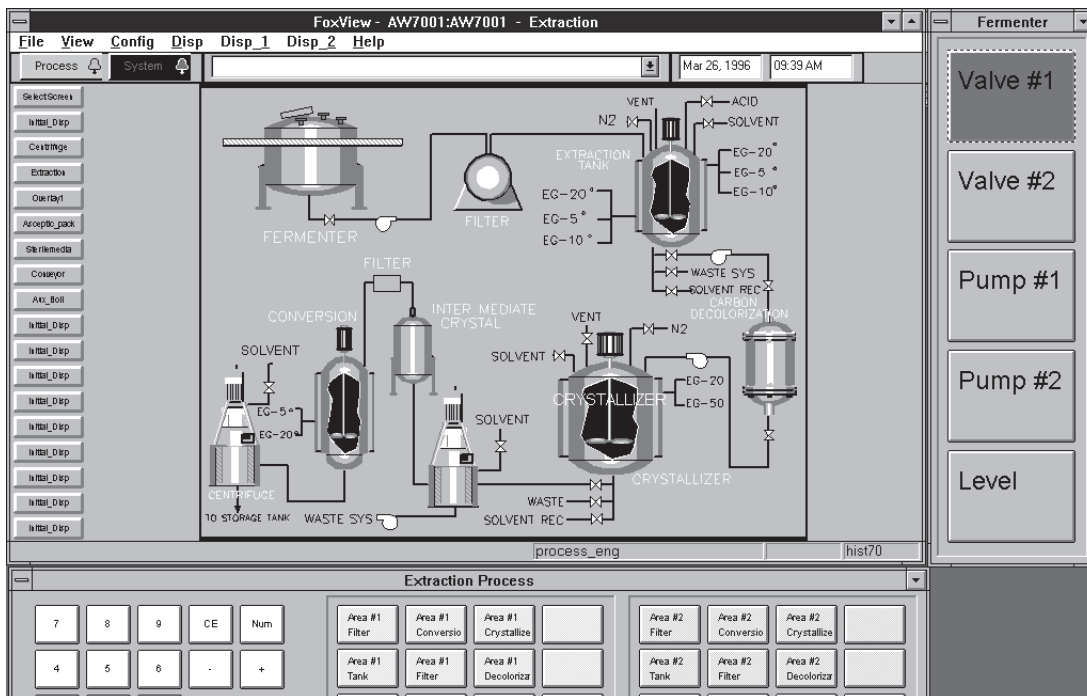


FoxPanels™ Configurator and Run-Time Software



The FoxPanels™ Configurator and Run-time software enables you to configure the notifications assigned to and actions performed by the keys on the hardware annunciator keyboards or the software alarm panels (which can be either the software emulation of a hardware keyboard or a custom alarm panel).

OVERVIEW

Notification of and response to alarm conditions are fundamental to process control. Configured hardware annunciator keyboards and/or soft alarm panels (emulated annunciator keyboards and custom alarm panels) on workstations alert operators to alarm conditions and allow them to take corrective action. FoxPanels™ software provides both a Configurator and a Run-time component.

The FoxPanels Configurator provides for the configuration of hardware annunciator keyboards, soft alarm panels, and horns. Hardware annunciator

keyboards and horns can be configured for both Windows® and Solaris® based workstations. Soft alarm panels can only be configured for Windows based workstations.

FoxPanels Run-Time provides for the display of soft alarm panels and the display of the FoxPanels Run-Time window (run-time manager). FoxPanels Run-Time interacts with the alarm subsystem to provide support for multiple soft alarm panels. The operator can view or change FoxPanels run-time preferences.

When an alarm condition occurs for an alarm that is configured for a hardware annunciator keyboard or soft alarm panel, the alarm is indicated by a flashing color on the indicator/button and by the sounding of a horn.

Pressing the button associated with the alarm:

- ▶ Automatically silences the horn
- ▶ Displays a process graphic (block detail display or optionally configured display)
- ▶ Optionally performs automatic corrective actions by running a program or executing a command.

FOXPANELS RUN-TIME SOFTWARE (WINDOWS PLATFORM)

The FoxPanels Run-Time software component runs on a Windows based workstation and provides alarm summary functions for soft alarm panels to ensure alarm notification. It includes:

- ▶ A Panel Manager (Run-Time display)
- ▶ Support for multiple user-configured soft alarm panels
- ▶ Alarm button selection to perform multiple configured actions
- ▶ A flexible custom alarm panel layout
- ▶ Horn support via the workstation speaker and optional sound card.

The FoxPanels Run-Time display provides a window for interfacing with the alarm panels as shown in Figure 1.

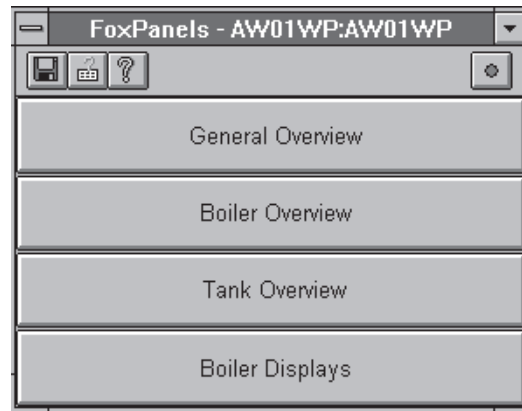


Figure 1. FoxPanels Run-Time Display

An overview of the soft alarm panel status is displayed via the buttons for accessing each of the alarm panels. Each button displays the status of the highest priority alarm on the associated soft alarm panel.

Alerting an operator of an alarm is ensured with the “float on top of other windows” or the “come to the front on alarm” option for both the FoxPanels Run-Time display and each of the soft alarm panels. Additionally, these windows are easily resized and positioned as desired. They can also be iconified (minimized).

When configured, the alarm indicators/buttons on the hardware annunciator keyboard or soft alarm panel (shown in Figure 2):

- ▶ Flash to indicate unacknowledged alarms
- ▶ Change to solid alarm color for an acknowledged alarm that has not returned to normal
- ▶ Show no indication for the no alarm state.

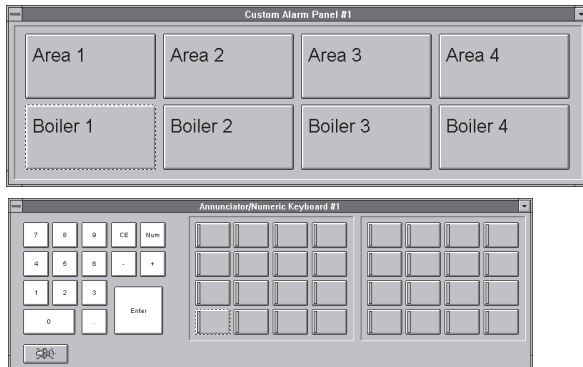


Figure 2. Soft Alarm Panels

Additionally, the configured buttons on hardware annunciator keyboards or soft alarm panels, when pressed, allow one or more corrective actions:

- ▶ Show process display, such as a display depicting the plant area in alarm
- ▶ Run program(s)
- ▶ Execute commands
- ▶ Silence the horn.

FOXPANELS CONFIGURATOR

The FoxPanels Configurator runs on a Windows based workstation and provides the following configurable items:

- ▶ Hardware annunciator keyboard
- ▶ Soft alarm panel, subpanel, and button properties
- ▶ Custom alarm panel layout and button properties
- ▶ Workstation horns.

The graphical nature of the FoxPanels Configurator allows you to select the type of alarm panel desired as shown in Figure 3 and display it graphically on the screen for configuration.

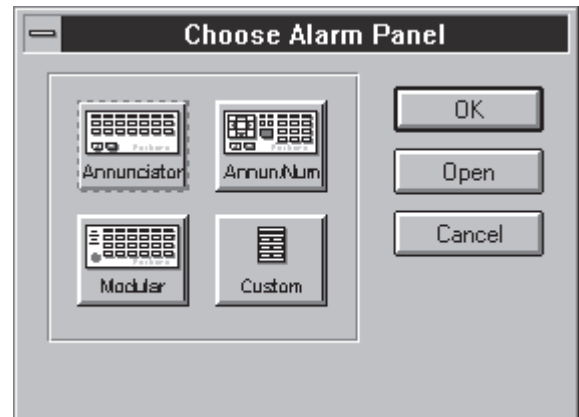


Figure 3. FoxPanels Initial Configuration Screen

The available alarm panels include a customizable default soft alarm panel with a single row of eight buttons and/or the following hardware or software annunciator keyboards:

- ▶ An annunciator keyboard with 48 indicator/button pairs arranged as three 4-row by 4-column panels
- ▶ An annunciator/numeric keyboard with 32 indicator/button pairs arranged in two 4-row by 4-column panels and a 16-button numeric keypad
- ▶ A modular keyboard with up to 48 indicator/button pairs arranged in three panels each in a 2-column by 8-row matrix.

The alarm panel graphic and the tabbed dialog boxes allow you to select the subpanel and buttons depicted on the screen and configure the properties associated with each (see Figure 4). Button and panel properties include:

- ▶ Button labels and alignment (soft alarm panel only)
- ▶ Process display to be accessed
- ▶ Program to be run
- ▶ Command to be executed

- ▶ The compound blocks to monitor for alarm status
- ▶ Alarm panel layout and visual appearance of the buttons (soft alarm panel only)
- ▶ Color of indicator/button (soft alarm panel only).

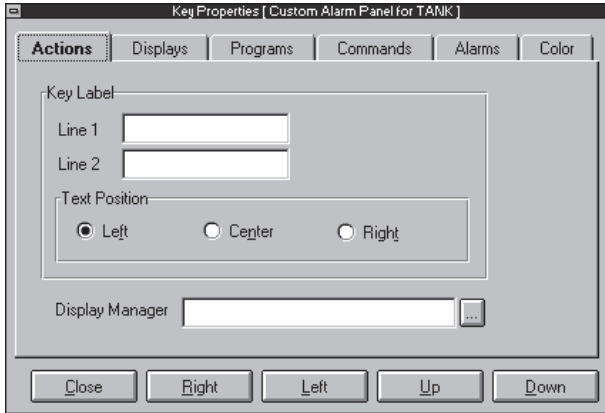


Figure 4. Key Properties Dialog Box (Actions Tab)

You can assign multiple control blocks to a single button. A maximum of 192 annunciator indicator/button pairs can be configured for the alarm panels (both software and hardware) per workstation.

The graphical workstation horn configuration allows you to configure both Foxboro Evo™ or I/A Series® workstation horns and external horns. The horn configuration function provides multiple horn tones (or more complex sounds) to indicate the priority of the alarm received.

These sounds are available via the workstation speaker and/or optional sound card (see Figure 5).

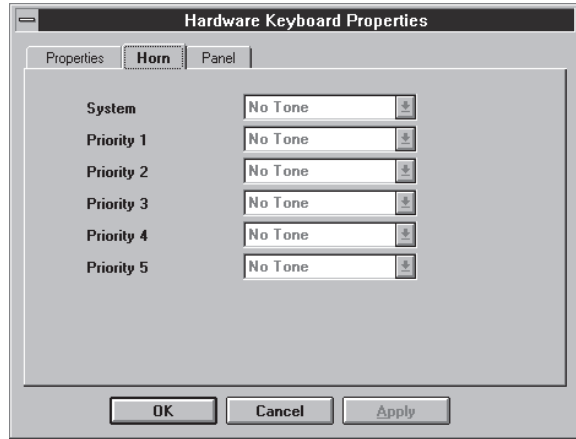


Figure 5. Horn Configuration Dialog Box

To aid the configuration effort, the FoxPanels Configurator provides a drag-and-drop button configuration. You can select a pre-configured display file using Windows Explorer and drop the file onto the desired button. The button label is assigned the display file name.

Additionally, the configurator exports and imports the Comma Separated Variable (CSV) format facilitating configuration using third party tools, such as spreadsheets or databases.

SPECIFICATIONS

Required Hardware and Software

- ▶ Foxboro Evo or I/A Series Windows® based workstations⁽¹⁾ - Foxboro Evo or I/A Series system with or without USB or annunciator keyboard(s).
- ▶ I/A Series Solaris® based workstations - I/A Series system with annunciator keyboards.

Configuration Specifications

- ▶ Total number of indicators/buttons available per workstation is a maximum of 192
- ▶ The maximum number of block assignments per workstation is 2000.

(1) The hardware annunciator keyboards are supported on any version of the Windows operating system which is supported by an I/A Series software release. The USB annunciator keyboards are supported on stations with I/A Series software v8.8 or later with Windows 7 or Windows Server 2008 R2 operating systems.

Foxboro[®]
by Schneider Electric

Invensys Systems, Inc
10900 Equity Drive
Houston, TX 77041
United States of America
<http://www.invensys.com>

Global Customer Support
Inside U.S.: 1-866-746-6477
Outside U.S.: 1-508-549-2424
Website: <https://support.ips.invensys.com>

Copyright 2014 Invensys Systems, Inc.
All rights reserved.
Invensys is now part of Schneider Electric.

Invensys, Foxboro, and Foxboro Evo are trademarks
owned by Invensys Limited, its subsidiaries and affiliates.
All other trademarks are the property of their respective
owners.

MB 031

1114