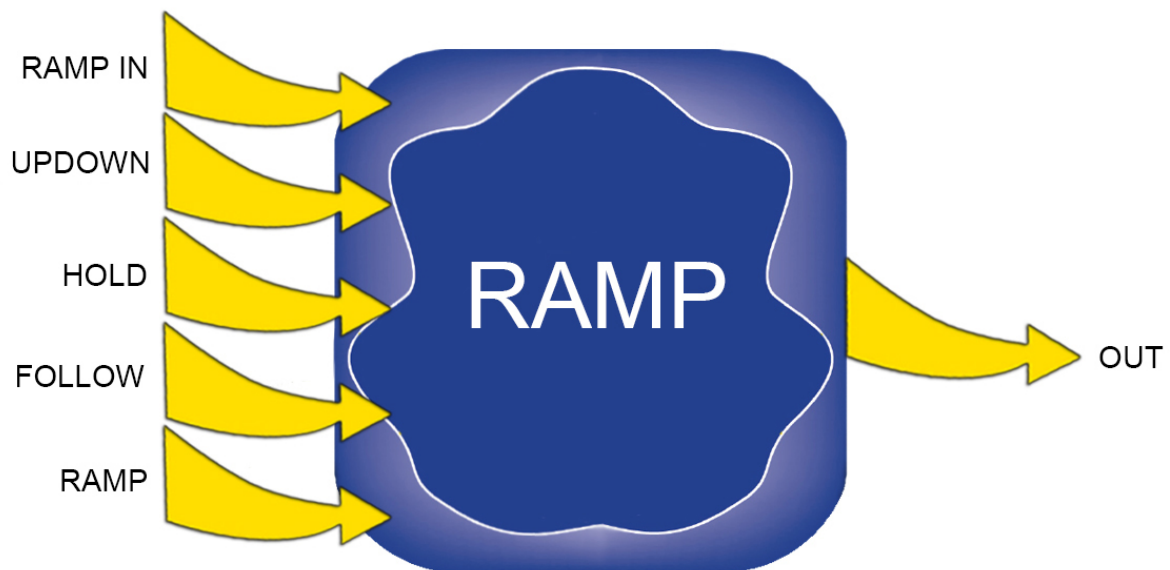


## Ramp (RAMP) Function Generator Block

### PSS 41S-3RAMP

#### Product Specification

May 2019



# Legal Information

The Schneider Electric brand and any trademarks of Schneider Electric SE and its subsidiaries referred to in this guide are the property of Schneider Electric SE or its subsidiaries. All other brands may be trademarks of their respective owners.

This guide and its content are protected under applicable copyright laws and furnished for informational use only. No part of this guide may be reproduced or transmitted in any form or by any means (electronic, mechanical, photocopying, recording, or otherwise), for any purpose, without the prior written permission of Schneider Electric.

Schneider Electric does not grant any right or license for commercial use of the guide or its content, except for a non-exclusive and personal license to consult it on an "as is" basis. Schneider Electric products and equipment should be installed, operated, serviced, and maintained only by qualified personnel.

As standards, specifications, and designs change from time to time, information contained in this guide may be subject to change without notice.

To the extent permitted by applicable law, no responsibility or liability is assumed by Schneider Electric and its subsidiaries for any errors or omissions in the informational content of this material or consequences arising out of or resulting from the use of the information contained herein.

# Overview

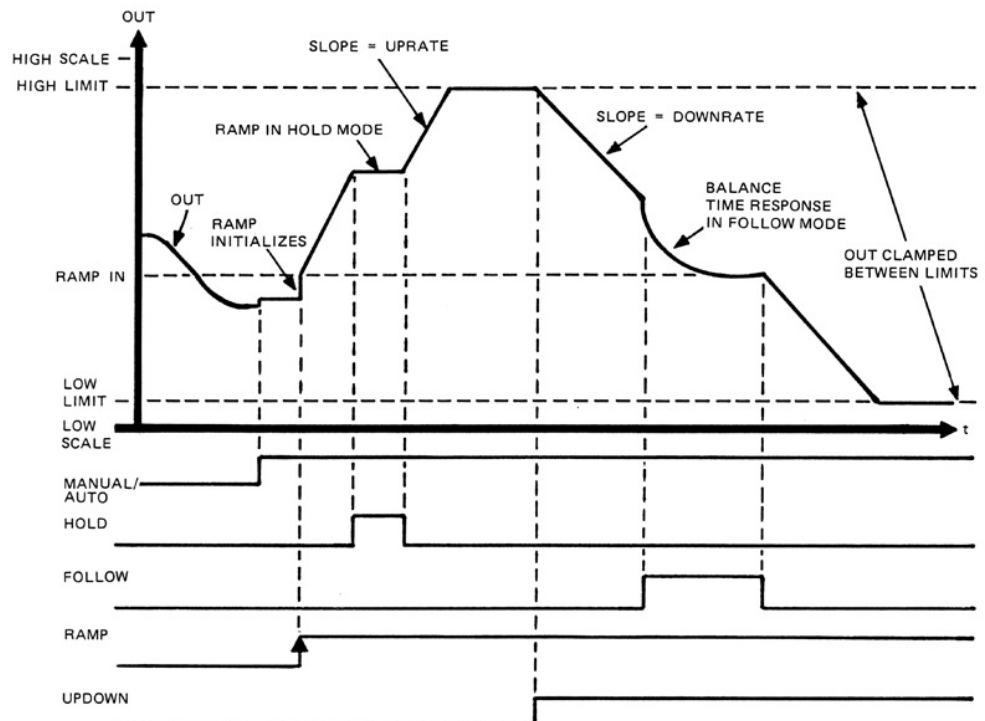
*The RAMP Function Generator block is a single linear ramp generator with an output for set point or signal variation at a controlled rate.*


The RAMP block output (OUT) is ramped in a velocity mode. The speed of the ramp is governed by two independent ramp rates for the up (increasing) and down (decreasing) directions. The direction of the ramp is controlled by a toggle input, UPDOWN. A connectable ramp initialization parameter (RAMP IN) can establish an initial position prior to ramping. Variable output limits constrain the peak-to-peak amplitude of the output ramp waveform and serve as the target values for each direction of the ramp. Output limit indicators signify that the output has reached its respective target limit. The block also has the capability to FOLLOW the RAMP input (measurement), with configurable reset balance time, or HOLD at the present output. Figure 1 illustrates a composite output ramp waveform for typical operational modes.

## Standard Features

- Assignable output engineering units and range
- Manual/Auto control of the output
- Output clamping between variable output limits with output limit indicators
- Output HOLD mode
- Output FOLLOW mode
- Output balancing feature in FOLLOW mode
- Connectable ramp initialization parameter for automatic output initialization
- Independent ramp rates for up and down directions
- Switchable ramp direction
- Scale factor for reconciling specified ramp rates to output engineering units

**Figure 1. RAMP Timing Diagram**



 **WARNING:** This product can expose you to chemicals including lead and lead compounds, which are known to the State of California to cause cancer and birth defects or other reproductive harm. For more information, go to [www.p65warnings.ca.gov/](http://www.p65warnings.ca.gov/).

Schneider Electric Systems USA, Inc.  
38 Neponset Avenue  
Foxborough, Massachusetts 02035–2037  
United States of America

Global Customer Support: <https://pasupport.schneider-electric.com>

As standards, specifications, and design change from time to time, please ask for confirmation of the information given in this publication.

© 2014–2019 Schneider Electric. All rights reserved.

PSS 41S-3RAMP, Rev A