



## System Advisor – Process Safety

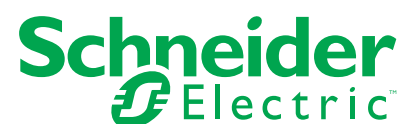
### PSS 41S-4TRIAUD

#### Product Specification

March 2024

The screenshot displays the EcoStruxure System Advisor - Process Safety software interface. The main window shows a logic diagram with various components like 'MY\_TR\_CAL', 'TR\_CALENDAR', and 'BEEP'. A 'Track Changes' window is open in the foreground, showing a table of changes.

Track Change	Change Date	T	Main Version	Variable	Description	Parameter	Type	Old Value	New Value	Audit
Execution Or...	2017-10-26 1...		332.0	PROGNAME		Execution Or...	MODIFIED			
Logic Changes	2017-10-26 1...		332.0	Program_1		VERSION	MODIFIED	1.114	1.115	
Logic Changes	2017-10-26 1...		332.0	Program_1_2		VERSION	MODIFIED	1.114	1.115	
Logic Changes	2017-10-26 1...		332.0	Program_1		DRWGMBY	MODIFIED		Project Manager	
Logic Changes	2017-10-26 1...		332.0	Program_1_2		DRWGMBY	MODIFIED		Project Manager	
Logic Changes	2017-10-26 1...		332.0	Program_1		DRWGMDATE	MODIFIED	6/9/1998 12:...	10/26/2017 12:00:0...	
Logic Changes	2017-10-26 1...		332.0	Program_1_2		DRWGMDATE	MODIFIED	6/9/1998 12:...	10/26/2017 12:00:0...	
Logic Changes	2017-10-26 1...		332.0	Program_1		DRWGMTIME	MODIFIED	11:32:46	10:51:55	
Logic Changes	2017-10-26 1...		332.0	Program_1_2		DRWGMTIME	MODIFIED	11:32:46	10:51:49	
Project Chan...	2017-10-26 1...		332.0	EXCOUNTR	Counter Exa...	DBTIME	MODIFIED	10:47:42	10:52:47	



# Legal Information

The information provided in this document contains general descriptions, technical characteristics and/or recommendations related to products/solutions.

This document is not intended as a substitute for a detailed study or operational and site-specific development or schematic plan. It is not to be used for determining suitability or reliability of the products/solutions for specific user applications. It is the duty of any such user to perform or have any professional expert of its choice (integrator, specifier or the like) perform the appropriate and comprehensive risk analysis, evaluation and testing of the products/solutions with respect to the relevant specific application or use thereof.

The Schneider Electric brand and any trademarks of Schneider Electric SE and its subsidiaries referred to in this document are the property of Schneider Electric SE or its subsidiaries. All other brands may be trademarks of their respective owner.

This document and its content are protected under applicable copyright laws and provided for informative use only. No part of this document may be reproduced or transmitted in any form or by any means (electronic, mechanical, photocopying, recording, or otherwise), for any purpose, without the prior written permission of Schneider Electric.

Schneider Electric does not grant any right or license for commercial use of the document or its content, except for a non-exclusive and personal license to consult it on an "as is" basis.

Schneider Electric reserves the right to make changes or updates with respect to or in the content of this document or the format thereof, at any time without notice.

**To the extent permitted by applicable law, no responsibility or liability is assumed by Schneider Electric and its subsidiaries for any errors or omissions in the informational content of this document, as well as any non-intended use or misuse of the content thereof.**

# Overview

In many industries, plant operations require staff to have positive knowledge of the safety system's configuration and to have access to accurate and up-to-date documentation. EcoStruxure™ System Advisor - Process Safety helps improve operational integrity and insight by providing enhanced configuration documentation, change tracking, and I/O management for EcoStruxure Triconex™ systems.

System Advisor - Process Safety is compatible with TriStation™ 1131 Developer's Workbench 4.7.0 – 5.7.0.

## Benefits

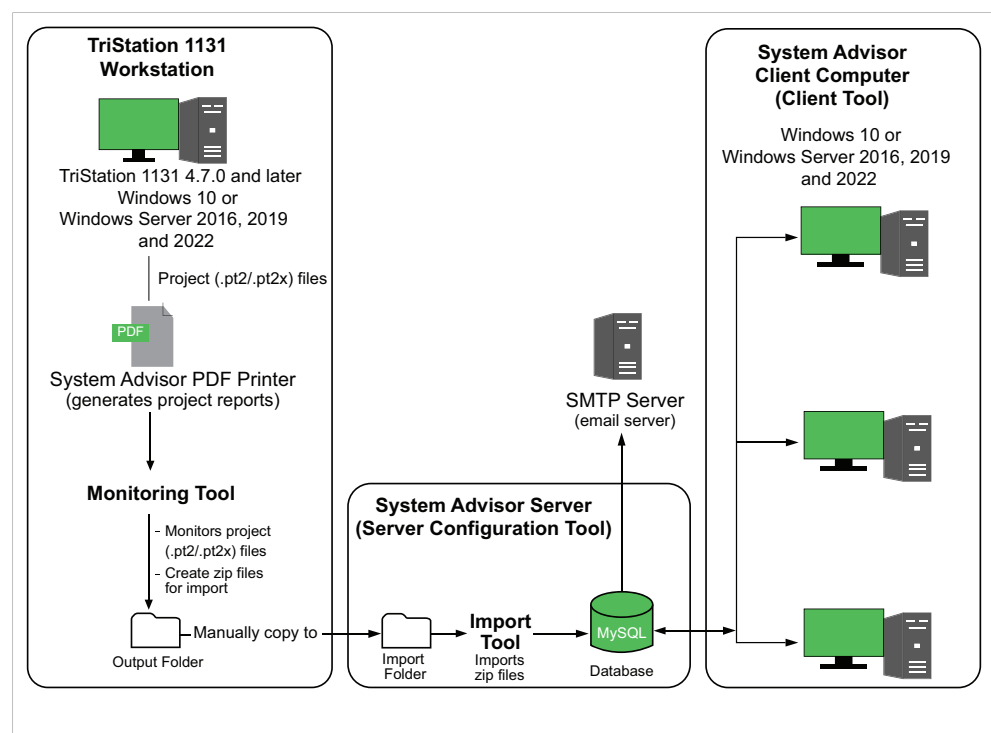
System Advisor - Process Safety helps you:

- Verify correct database configuration and optimize resource utilization and system performance.
- Reduce audit costs for regulatory compliance.
- Reduce costs associated with managing documentation updates.
- Improve reliability.
- Improve process performance.

## Architecture

System Advisor - Process Safety is based on a client-server architecture. Information flows from the Triconex control network stations to System Advisor.

**Figure 1 - Typical Setup with System Advisor - Process Safety**



# Features

## System Documentation

- Provides complete I/O documentation.
- Documents all tagname references and uses icons to indicate the tagname's data type (input, output, or memory).
- Documents CEMPLE (CEM), Structured Text, Ladder, and Function Block Diagram (FBD) logic.

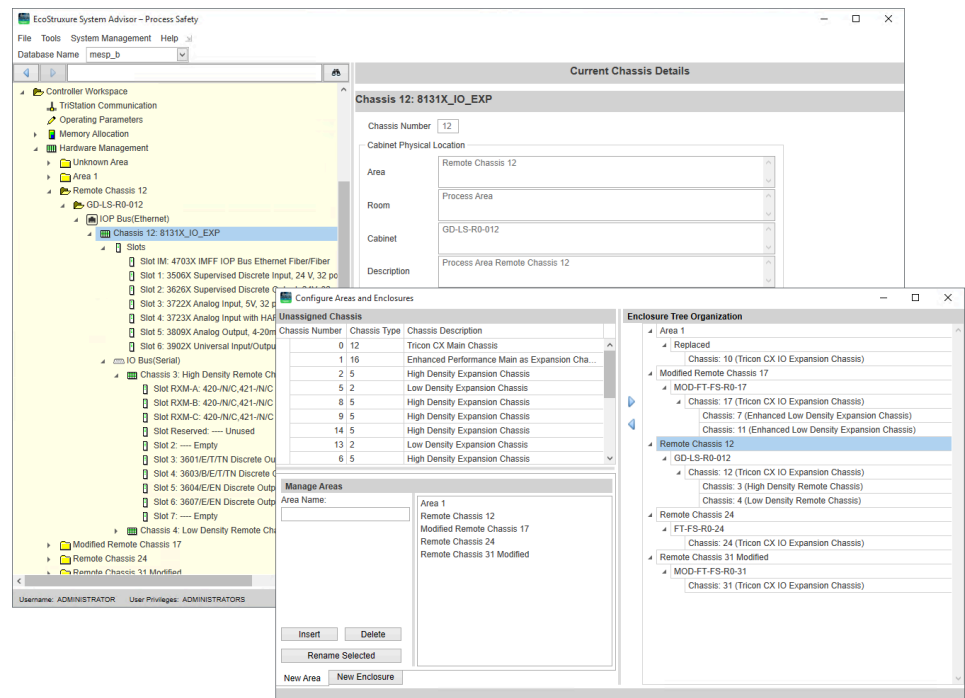
## Change Tracking

- Tracks a range of TriStation 1131 configuration changes, including:
  - Logic
  - Tagnames
  - User Privileges
  - Cross-references
  - Hardware, execution order, and SOE configuration

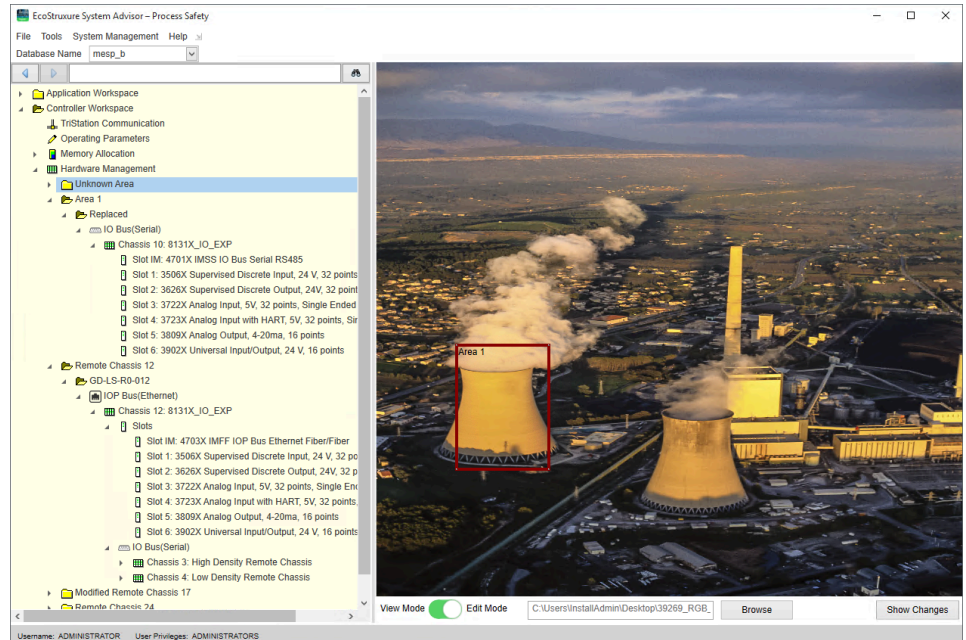
## Hardware Management

- Supports all Triconex controllers — Tricon™, Trident™, Tri-GP, and Tricon CX.
- For Tricon CX systems, supports configurations with Tricon CX I/O modules and Tricon I/O modules (referred to as a mixed system).
- Displays the chassis segregated by their serial (IMSS) and Ethernet (IMFF) connections.
- Allows you to assign unassigned chassis and create new areas and enclosures.

Automatically creates and assigns areas and enclosures for Tricon CX chassis based on the TriStation 1131 configuration.



- Enables you to associate physical areas to hardware assets with an image of your facility.



### I/O Management

- Documents I/O.
- Finds spare I/O.
- Reserves I/O.

### Advanced Queries

- Provides standard queries.
- Allows customized queries.
- Allows querying for multiple System Advisor databases.

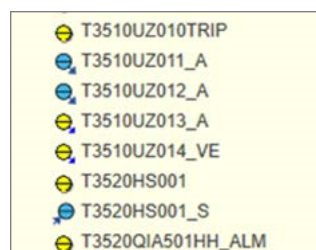
### Reporting

- Stores all historical information in a server database.
- Provides historical view by date and change.
- Allows customized views by filtering and sorting.

### Connect System Advisor - Process Safety and System Advisor - Process Control

When you set up communication between System Advisor - Process Safety and System Advisor - Process Control:

- Enables you to open System Advisor - Process Control from inside System Advisor - Process Safety and System Advisor - Process Safety from inside System Advisor - Process Control.
- Uses blue icons to indicate shared tagnames that communicate with both the Triconex and Foxboro DCS systems.



## Regulatory Position

System Advisor - Process Safety is a response to practices required by OSHA 1910, IEC 61511, IEC 61508, IEC 61131, and other global regulations and rules. These regulations require that changes made to the safety system be documented and distributed to all affected parties, especially to the process operators and their supervisors, and that access to the system be controlled and monitored.

Although System Advisor - Process Safety provides support for these regulations, it is not sufficient by itself to verify that any given installation is compliant.

Certification of any given installation as compliant is achieved not only through the application of hardware and software products like System Advisor - Process Safety, but also through external review, internal procedures, and a variety of other mechanisms.

# System Requirements

System Advisor - Process Safety operates with all Triconex hardware that uses TriStation 1131 Developer's Workbench version 4.7.0 – 5.7.0.

System Advisor - Process Safety is supported in virtual environments that meet the minimum workstation and server requirements.

The minimum requirements for the System Advisor server and System Advisor client are listed in Table 1 and Table 2 respectively.

**Table 1 - System Advisor - Process Safety Desktop and Servers**

Computer	Desktop or Server
Operating System	<ul style="list-style-type: none"><li>Windows 10 (version 1607 and above)</li><li>Windows Server 2016 (32-bit or 64-bit)</li><li>Windows Server 2019 (64-bit)</li><li>Windows Server 2022 (64-bit)</li></ul>
CPU	Intel or equivalent 2.2 GHz. Multi-core enabled with at least 4 cores.
Memory	8 GB RAM or greater
Hard Drive	100 GB available space in hard drive


**Table 2 - System Advisor - Process Safety Clients**

Computer	Desktop or Server
Operating System	<ul style="list-style-type: none"><li>Windows 10 (version 1607 and above)</li><li>Windows Server 2016 (32-bit or 64-bit)</li><li>Windows Server 2019 (64-bit)</li><li>Windows Server 2022 (64-bit)</li></ul>
CPU	Intel or equivalent 1.5 GHz. Multi-core enabled with at least 4 cores.
Memory	2 GB RAM or greater
Hard Drive	100 GB available space in hard drive
Monitor Resolution	1280 x 1024

## Related Documents

Document Number	Document Name
B0750HG	<i>EcoStruxure™ System Advisor - Process Safety User's Guide</i>
B0750SQ	<i>EcoStruxure™ System Advisor - Process Safety Release Notes</i>
B0750HA	<i>EcoStruxure™ System Advisor - Process Control User's Guide</i>
PSS 41S-4SYSAUD	<i>EcoStruxure™ System Advisor - Process Control Product Specification</i>
9720150-xxx	<i>EcoStruxure™ Triconex™ TriStation™ 1131 Developer's Workbench Developer's Guide 5.x</i>
9720100-xxx	<i>EcoStruxure™ Triconex™ TriStation™ 1131 Developer's Workbench Developer's Guide 4.x</i>
9792155-xxx	<i>EcoStruxure™ Product Release Notice for TriStation™ 1131 5.x</i>



 **WARNING:** This product can expose you to chemicals including lead and lead compounds, which are known to the State of California to cause cancer and birth defects or other reproductive harm. For more information, go to [www.p65warnings.ca.gov/](http://www.p65warnings.ca.gov/).

Schneider Electric Systems USA, Inc.  
70 Mechanic Street  
Foxboro, Massachusetts 02035–2040  
United States of America

Global Customer Support: <https://pasupport.se.com>

As standards, specifications, and design change from time to time,  
please ask for confirmation of the information given in this publication.

© 2019–2024 Schneider Electric. All rights reserved.

PSS 41S-4TriAud, Rev F