



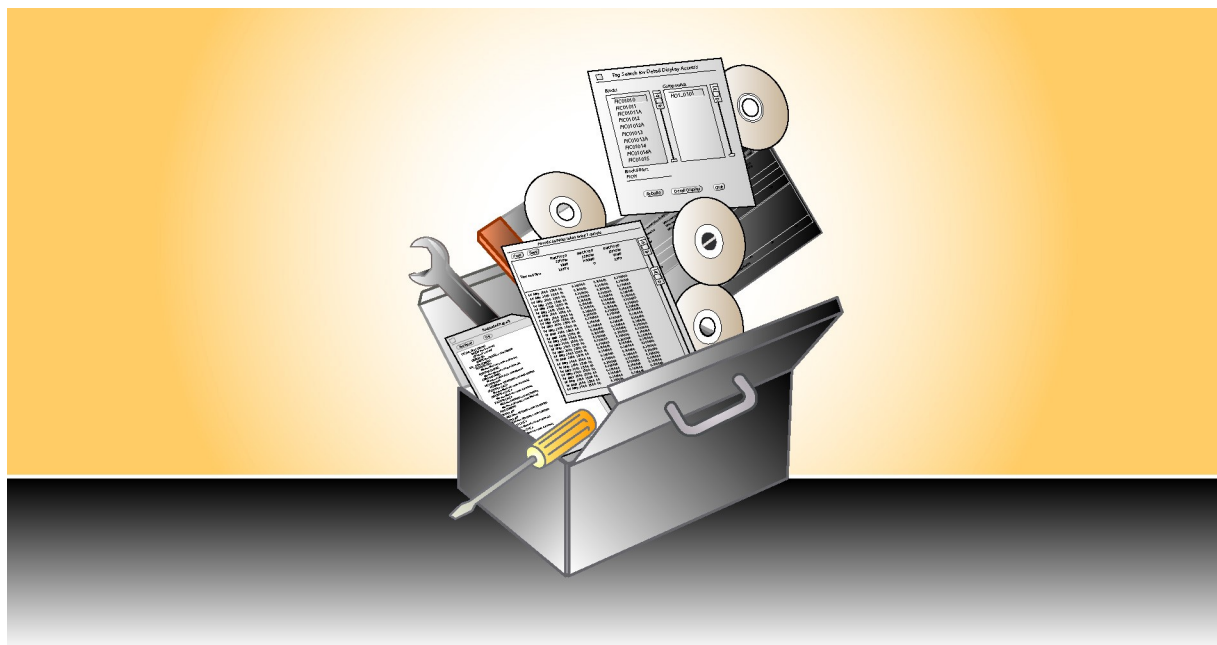
Foxboro™ DCS

Foxboro™ DCS and I/A Series® Tools Suite

PSS 41S-7SwTools

Product Specification

September 2022



Legal Information

The Schneider Electric brand and any trademarks of Schneider Electric SE and its subsidiaries referred to in this guide are the property of Schneider Electric SE or its subsidiaries. All other brands may be trademarks of their respective owners.

This guide and its content are protected under applicable copyright laws and furnished for informational use only. No part of this guide may be reproduced or transmitted in any form or by any means (electronic, mechanical, photocopying, recording, or otherwise), for any purpose, without the prior written permission of Schneider Electric.

Schneider Electric does not grant any right or license for commercial use of the guide or its content, except for a non-exclusive and personal license to consult it on an "as is" basis. Schneider Electric products and equipment should be installed, operated, serviced, and maintained only by qualified personnel.

As standards, specifications, and designs change from time to time, information contained in this guide may be subject to change without notice.

To the extent permitted by applicable law, no responsibility or liability is assumed by Schneider Electric and its subsidiaries for any errors or omissions in the informational content of this material or consequences arising out of or resulting from the use of the information contained herein.

Overview

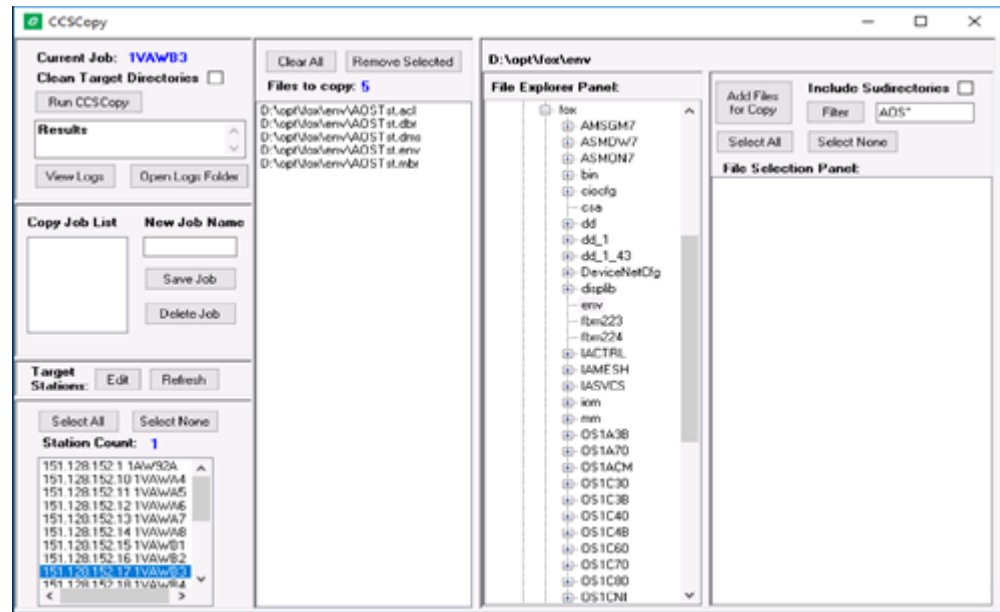
The EcoStruxure™ Foxboro™ DCS and I/A Series® Tools Suite is a collection of tools that make Foxboro™ DCS Control Core Services and the I/A Series more useful and applications easier to develop.

The suite consists of these products:

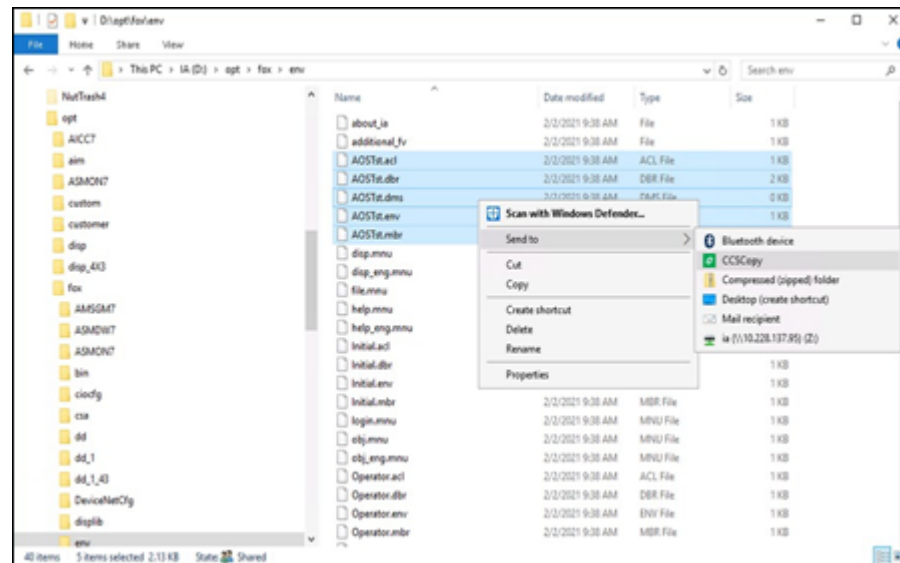
Product	Description
CCSCopy	Copies files and folders to a single or to multiple Foxboro DCS workstations/servers.
cpShell	Supports the execution of programs and scripts from sequence blocks.
FBMTrack	Allows rapid identification of all blocks associated with a particular FBM. In addition, this utility graphically illustrates the in-use I/O points per FBM and provides quick access to the FoxView™ Detail Display for the related control block.
FVTimer	Closes idle non-primary FoxView display managers.
Message Logger	Allows real-time capture of messages sent by the APRINT message system which can be forwarded to serial port(s) or logged to ASCII files for later use with the Message Logger reporting feature.
OAJRelay and SMONRelay	Intercepts Operator Action Journal (OAJ) and System Monitor messages and relays them to user-defined destination names on the control network.
SSCSupport	Supports those programs that cannot read and manipulate the status bits required to implement Supervisory Setpoint Control, provides a means of tying external computers to control blocks with a minimum effort.
TagSearch	Provides quick access to the FoxView Detail Display for a specified control block. This utility supports filtering by block name.

CCSCopy

The CCSCopy utility copies selected files and folders to Foxboro DCS workstations/servers residing on the same control network or alternate network.



Files and folders can be copied using the CCSCopy user interface or from the **Send to > CCSCopy** shortcut.



Copy Jobs can be saved for future use.

cpShell

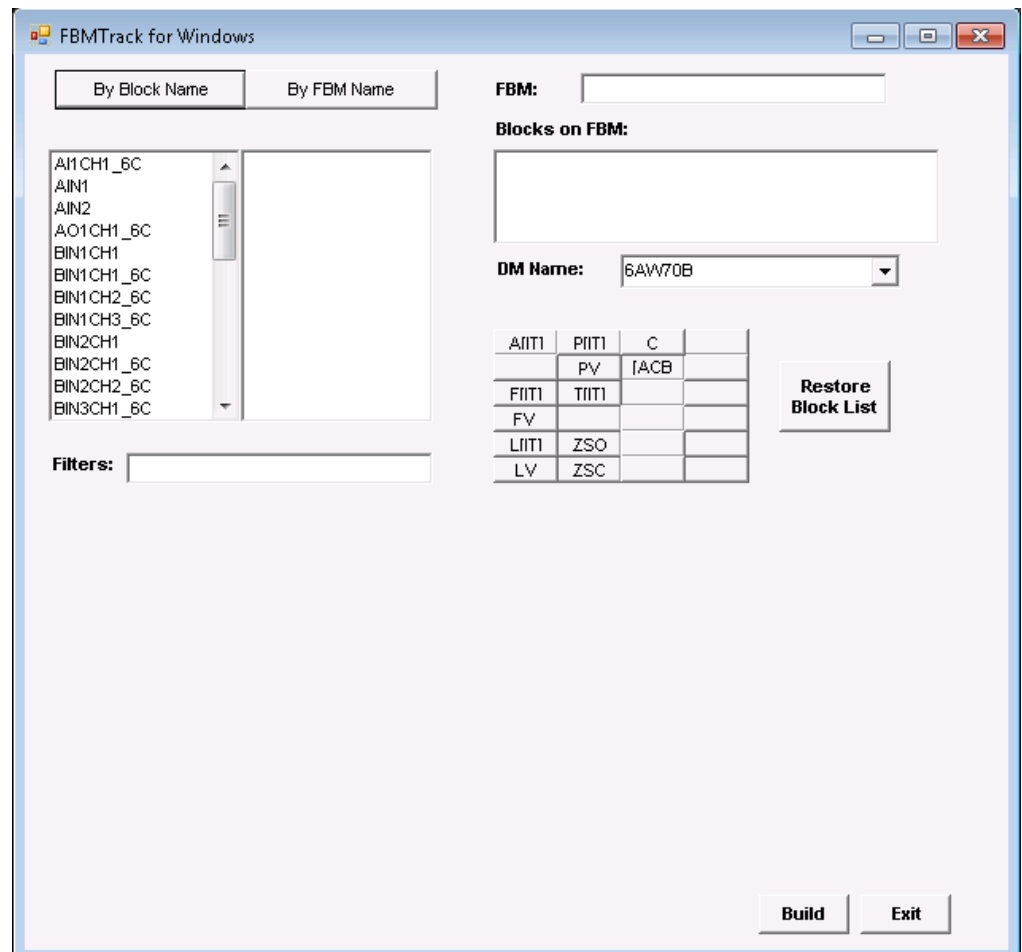
cpShell is used to run programs when certain conditions are detected or to log information about the process. cpShell supports the execution of programs and scripts from sequence blocks. Sequence blocks can send a message to the cpShell software in the same manner as any other device. However, when cpShell receives the message, the cpShell process treats it as a command to execute. Each command is run separately.

FBMTrack

When an FBM fails, the plant needs to identify the control loops associated with the failed device quickly and easily. FBMTrack presents either all I/O blocks or all FBMs in a system on a display that quickly allows the identification of all blocks associated with a particular FBM.

In addition, this utility can indicate which of the I/O points in the FBM are in use and it can raise the FoxView Detail Display for the selected block.

The FBMTrack software also provides user-specified block filters so that only blocks of interest are shown.



FVTimer

The FVTimer utility closes non-primary idle FoxView display managers using configurable exit timers.

When a configured FoxView display manager starts, FVTimer tracks the instance for periods of inactivity. When the inactivity time exceeds the configured exit time, the display manager closes.

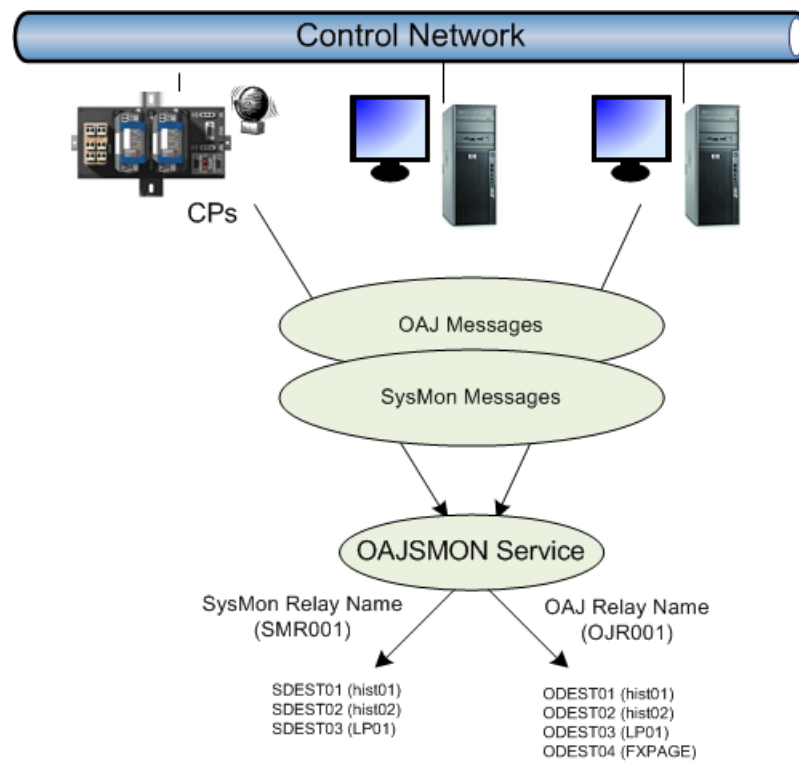
OAJRelay and SMONRelay

The OAJRelay and SMONRelay utility relays Operator Action Journal (OAJ) and System Monitor (SysMon) messages to user-defined destination names on the control network.

OAJRelay and SMONRelay can be configured to capture incoming messages for up to twenty process names and relay those messages on to defined OAJ and SysMon destinations on the control network.

The OAJRelay and SMONRelay application supports up to twenty OAJ destinations and up to twenty SysMon destinations.

Figure 1 - OAJRelay and SMONRelay Data Flow

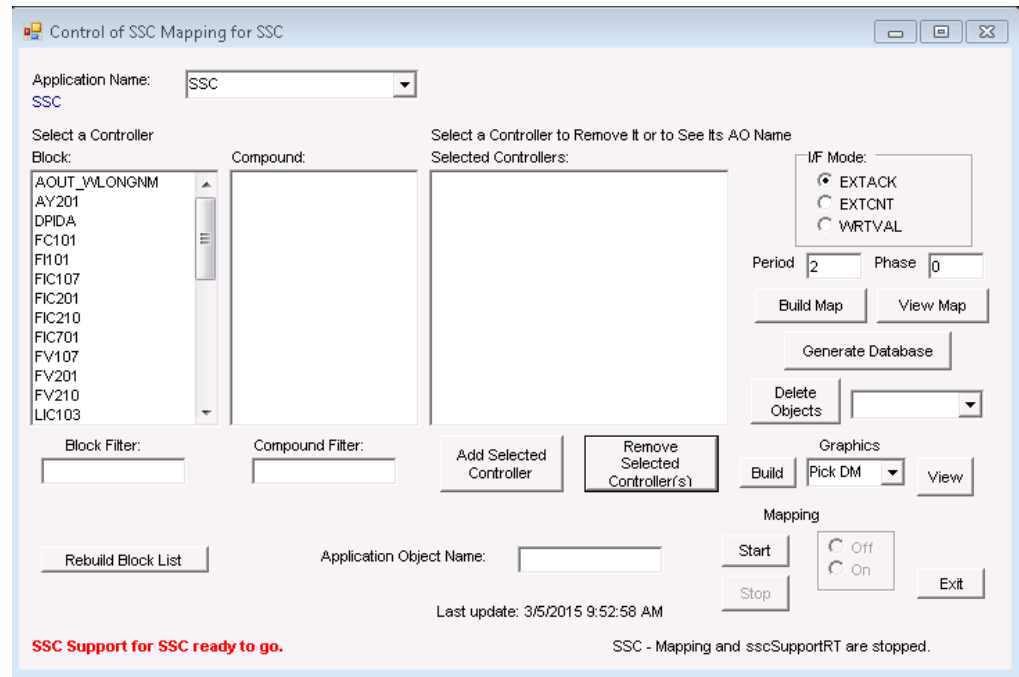


SSCSupport

Using the SSCSupport Configurator, SSCSupport provides these services:

- Supports the grouping of control blocks (AOUT family, PID family, or RATIO) into a “Controller” interface or application.
- Supports mapping externally generated setpoints and acknowledgement flags into the Supervisory Input (SUP_IN) of the selected blocks.
- Supports the automatic construction of a graphic that displays the Supervisory Control Status of each of the selected control blocks.

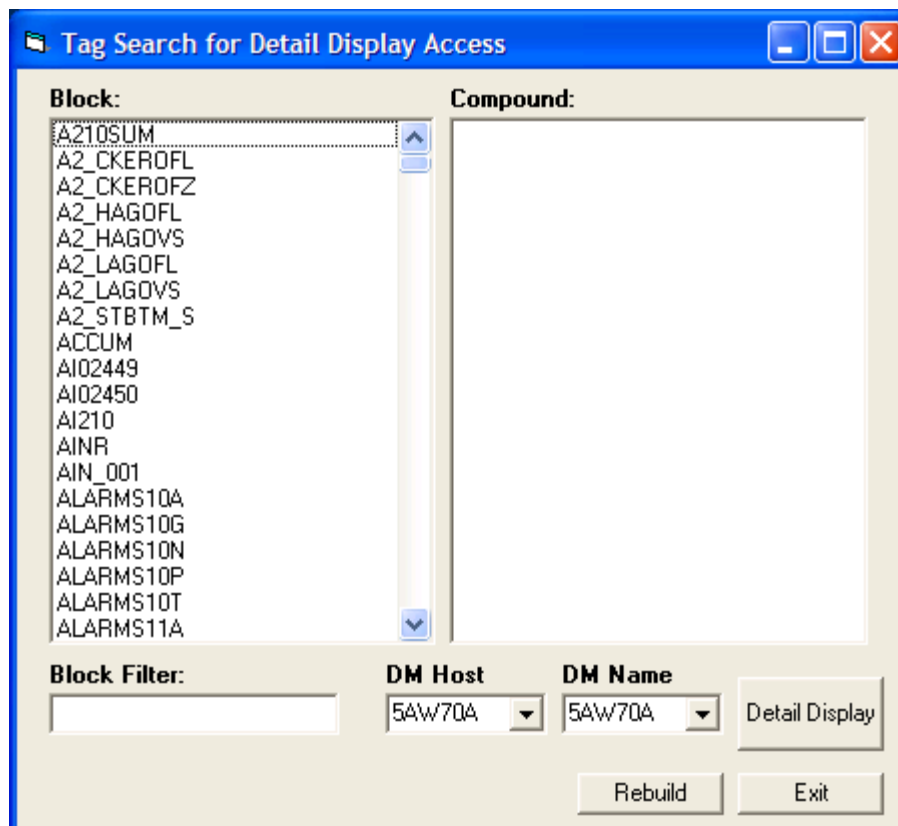
The program serves as a running example of the logic used by supervisory applications and as a means of tying external computers to control blocks with a minimum of effort.



TagSearch

TagSearch provides access to control blocks by block names, which is useful to plants with an ISA naming convention.

By default, the TagSearch software raises the standard detail display on the specified display manager.



Requirements

The Foxboro™ DCS and I/A Series® Tools Suite currently supports these software versions:

- v8.8 I/A Series® Standard or Security Enhanced software with default domain group policies
- v9.0 and later Foxboro™ DCS Control Core Services Local Edition Enterprise Edition with default domain group policies

NOTE: When using Security Enhanced or Enterprise Edition software, changing the default domain group policies or improperly using or configuring a firewall, including the authorized McAfee® ePolicy Orchestrator (ePO) firewall, can adversely affect the operation of the Foxboro DCS and I/A Series Tools Suite applications. Only qualified personnel should modify Active Directory Group Policies and configure firewalls.

These Foxboro DCS and I/A Series Tools Suite applications require this software to be installed, configured, and running:


Application	Requirements
CCSCopy	No additional software requirements
cpShell	No additional software requirements
FBMTrack	FoxView display managers
FVTimer	FoxView display managers
Message Logger	<ul style="list-style-type: none"> • No additional software requirements • If sending messages to a serial device is required, you need a USB-to-Serial Adapter.
OAJRelay and SMON Relay	No additional software requirements
SSCSupport	<ul style="list-style-type: none"> • FoxView display managers • AIM*API • Microsoft SQL Server. Microsoft SQL Server 2017 Express Edition and Microsoft SQL Server 2008 Express Edition are provided with the Foxboro DCS and I/A Series Tools Suite
TagSearch	<ul style="list-style-type: none"> • FoxView display managers • AIM*API

Ordering Information

The Foxboro DCS and I/A Series Tools Suite is sold on a per process basis. The customer is free to use the tools as needed within the unit for which they were purchased. A unit is defined to be a set of System Hardware dedicated to the manufacture of a specific product or set of closely related products. Systems are generally sold to support a particular unit. In this case, only one license is required. However, if the system is running several units in the plant, multiple licenses are required.

Bulk purchases for entire plant sites are available for larger installation or customer configuration. Contact your account representative for details.

Product	Part Number
Foxboro™ DCS and I/A Series® Tools Suite	Q0301JL

 **WARNING:** This product can expose you to chemicals including lead and lead compounds, which are known to the State of California to cause cancer and birth defects or other reproductive harm. For more information, go to www.p65warnings.ca.gov/.

Schneider Electric Systems USA, Inc.
70 Mechanic Street
Foxboro, Massachusetts 02035–2040
United States of America

Global Customer Support: <https://pasupport.schneider-electric.com>

As standards, specifications, and design change from time to time, please ask for confirmation of the information given in this publication.

© 2015–2022 Schneider Electric. All rights reserved.

PSS 41S-7SwTools, Rev A